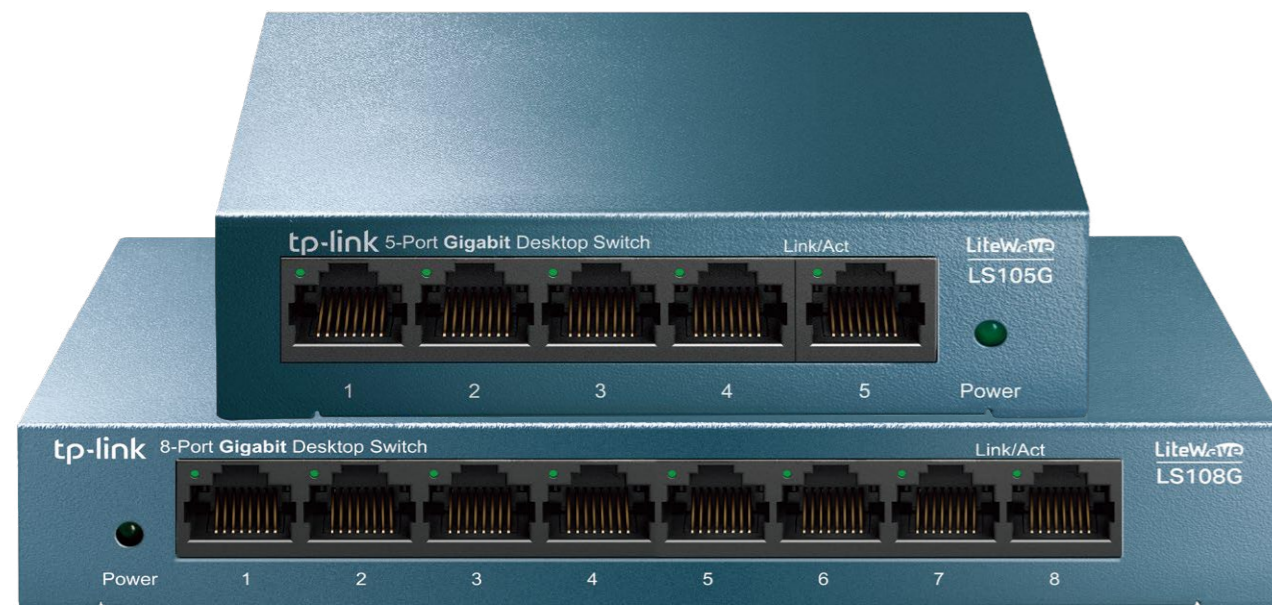




LiteWave Series

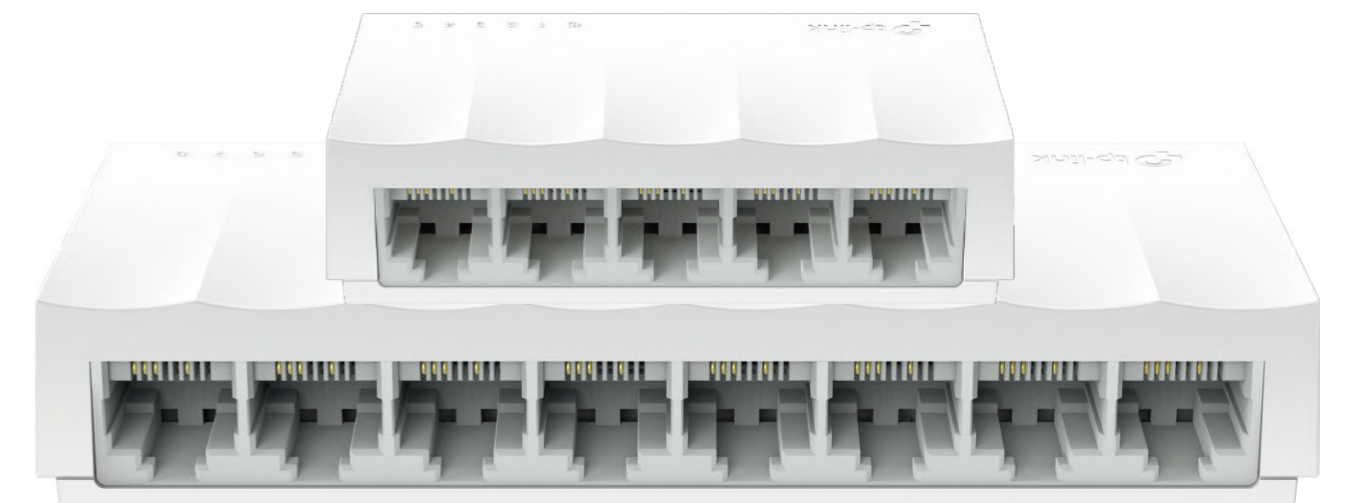
Ideal for
Basic
Networks



LS105G/LS108G



LS1005G/LS1008G



LS1005/LS1008

Overview

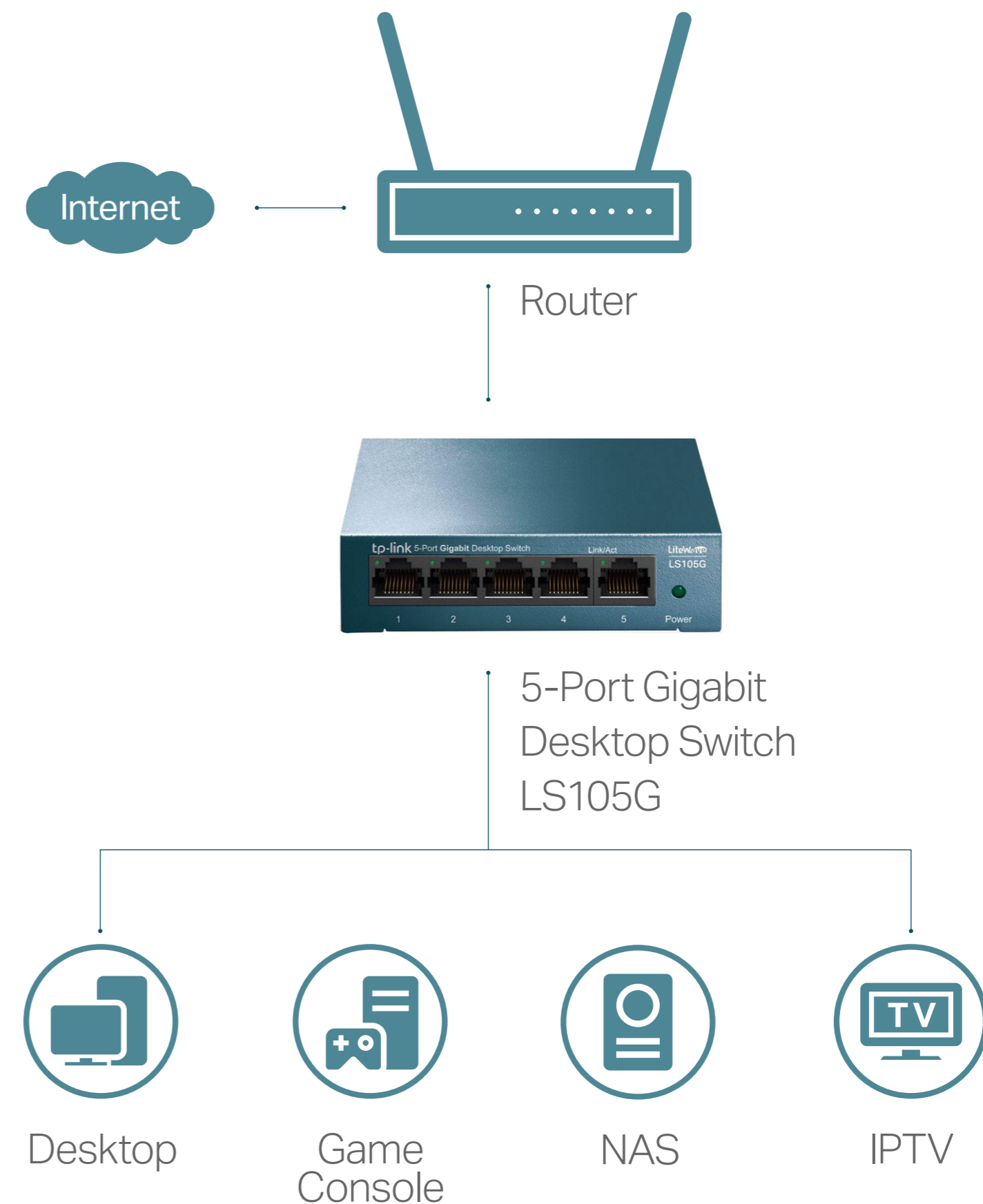
The TP-Link LiteWave Series Unmanaged Switches provide simplest and most affordable way to expand your wired network. They are reliable and easy to use. With these plug-and-play switches, you can expand your network connections to multiple devices instantly. With all ports support Auto-MDI/MDIX, there's no need to worry about the type of cable to use. Moreover The LiteWave Series also supports energy-efficient technology, helping you save power and money.

Highlights







- Plug and play, no configuration needed;
- Fast Ethernet or Gigabit Ethernet connectivity;
- Green Ethernet technology saves power;
- IEEE 802.3x flow control provides reliable data transfer;
- Compact form and desktop design;
- Fanless design ensures quiet operation
- Auto-MDI/MDIX eliminates the need for crossover cables
- Auto-negotiation guarantees the highest speed for each port
- Support 802.1p/DSCP QoS function (only for LS105G/LS108G)
- Wall-mounting design(only for LS105G/LS108G/LS1005G/LS1008G)

Network Diagram

Note: LS105G is used for demonstration



Specifications

Product Pictures						
Model	LS105G	LS108G	LS1005G	LS1008G	LS1005	LS1008
Standards	IEEE 802.3i, IEEE 802.3u, IEEE 802.3ab, IEEE 802.3x, IEEE 802.1p		IEEE 802.3i, IEEE 802.3u, IEEE 802.3ab, IEEE 802.3x		IEEE 802.3i, IEEE 802.3u, IEEE 802.3x	
Forwarding Mode	Store and forward					
Interface	5 10/100/1000Mbps RJ45 ports	8 10/100/1000Mbps RJ45 ports	5 10/100/1000Mbps RJ45 ports	8 10/100/1000Mbps RJ45 ports	5 10/100Mbps RJ45 ports	8 10/100Mbps RJ45 ports
Shell material	Metal	Metal	Plastic	Plastic	Plastic	Plastic
CONNECTOR TYPE	Plastic	Plastic	Plastic	Plastic	Plastic	Plastic
Switching Capacity	10Gbps	16Gbps	10Gbps	16Gbps	1.0Gbps	1.6Gbps
MAC Address Table	2K	4K	2K	4K	2K	2K
Packet Forwarding Rate	7.4Mpps	11.9Mpps	7.4Mpps	11.9Mpps	0.7Mpps	1.2Mpps
Jumbo Frame	15KB	15KB	15KB	15KB	2KB	2KB
Advanced Features	Green Technology; 802.3x Flow Control; 802.1p/DSCP QoS		Green Technology; 802.3x Flow Control			
Max Power Consumption	2.776W	5.47W	3.7W	5.43W	1.65W	2.64W
Max Heat Dissipation	9.466 Btu/hr	13.46 Btu/hr	12.617 Btu/hr	13.38 Btu/hr	5.627Btu/hr	9.002Btu/hr
LEDs	Power, Link/Act (indicator per port built into RJ45 port)					
Power Supply (External Adapter)	5V/0.6A	9V/0.6A	5V/0.6A	9V/0.6A	5V/0.6A	
Dimensions (W × D × H)	3.9*3.9*1.0 in. (99.8 x 98 x 25 mm)	6.2 x 3.9 x 1.0 in. (158 x 99.1 x 25 mm)	3.54*2.83*0.91 in. (90 x 72 x 23 mm)	5 x 2.62 x 0.91 in. (127 x 66.5 x 23 mm)	3.3*1.8*0.9 in. (83.6 x 45.7 x 22.8 mm)	4.9 x 1.9 x 0.9 in. (124.6 x 48.7 x 22.8 mm)
Wall-Mounting	Yes				No	
Certifications	CE, FCC, RoHS				CE, RoHS	
Environment	Operating Temperature: 0°C~40°C (32°F~104°F) Storage Temperature: -40°C~70°C (-40°F~158°F) Operating Humidity: 10% ~ 90%RH, non-condensing Storage Humidity: 5%~95%RH, non-condensing		Operating Temperature: 0°C~40°C (32°F~104°F) Storage Temperature: -40°C~60°C (-40°F~140°F) Operating Humidity: 10% ~ 90%RH, non-condensing Storage Humidity: 5%~95%RH, non-condensing			