



AC5400 MU-MIMO Tri-Band Gaming Router

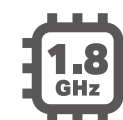
Dominate the Competition



Archer C5400X



1000Mbps + 2167Mbps
+2167Mbps Tri-Band



1.8GHz 64-bit
Quad-Core CPU



Range Boost



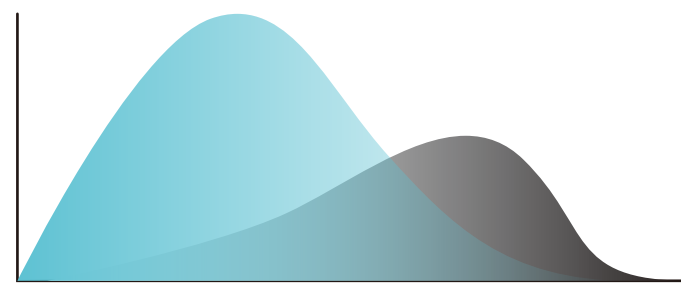
MU-MIMO

Highlights

Battle-Tested, State-of-the-Art Processing Architecture

An extremely powerful 1.8 GHz 64-bit quad-core processor, three co-processors and 1 GB RAM work tirelessly at the heart of your network command center.

66%
Faster Throughput



*when the CPU runs at full capacity

Dynamic Optimization Engine and Comprehensive Security

TP-Link HomeCare, powered by Trend Micro, updates automatically and always keeps your home protected.



HomeCare



Antivirus



Parental Controls

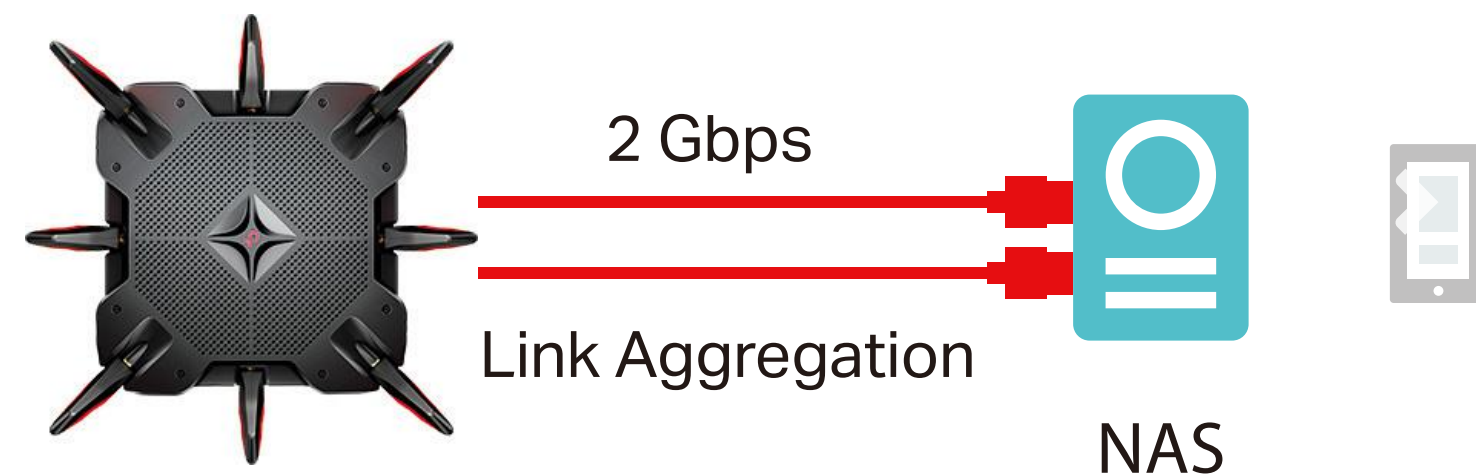


Quality of Service

Highlights

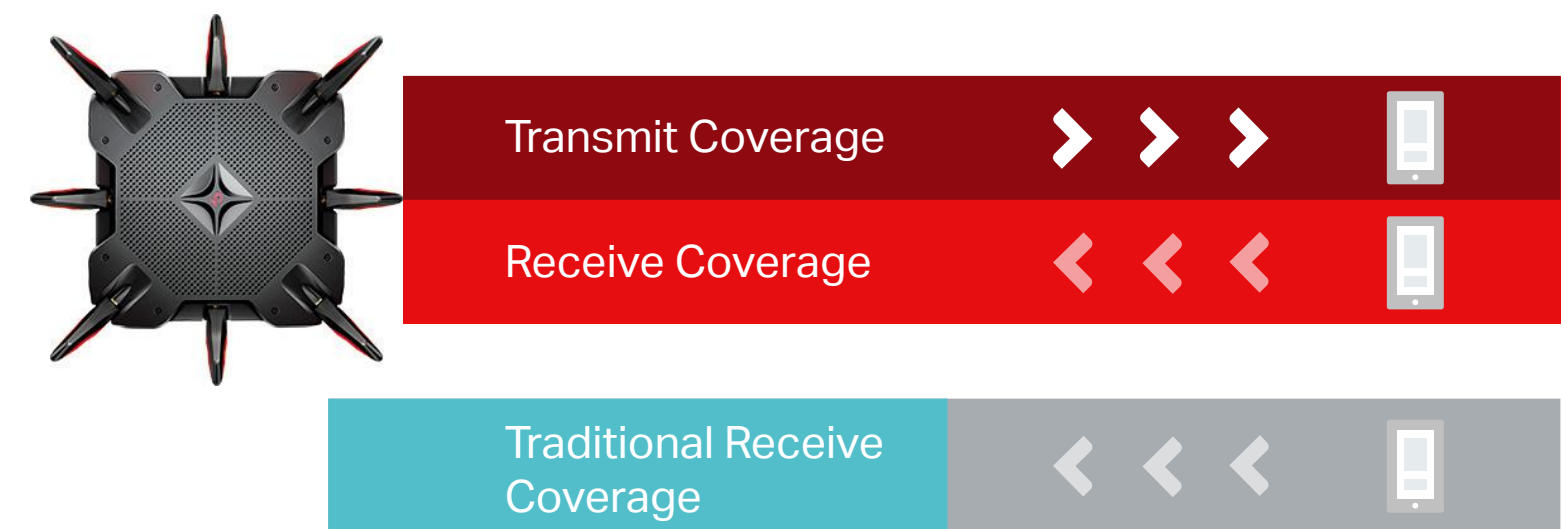
Link Aggregation

Team two of the eight Gigabit LAN ports or one LAN with the WAN port to double connection speeds from 1 Gbps to 2 Gbps.



RangeBoost

Devices located farther away from the Archer C5400X benefit from greatly improved connection quality so you can game anywhere, from the basement to the garage and even the backyard.

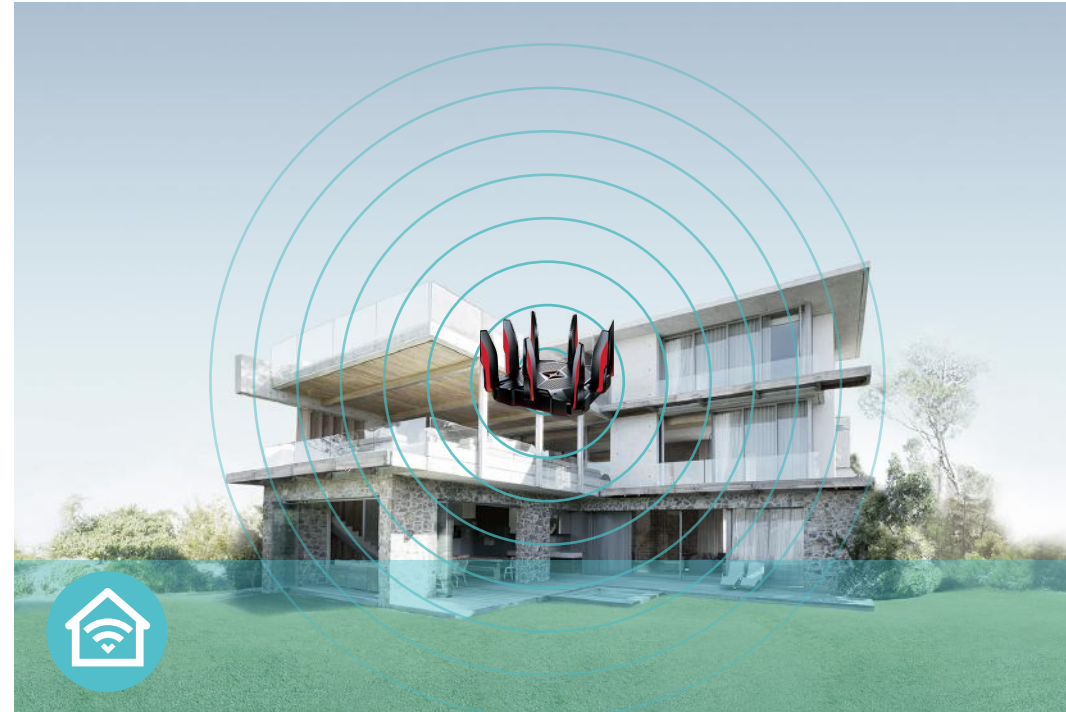


Features



Speed

- **Ultimate Wireless Speed** – Combined wireless speeds up to 1000Mbps over 2.4GHz, 2167Mbps over 5GHz-1 and 2167Mbps over 5GHz-2
- **Support 802.11 ac** – Provides a data transfer rate 3 times faster than 802.11n for each stream
- **1.8GHz 64-bit Quad-Core CPU** – A 1.8GHz 64-bit quad-core CPU balances the demands of your devices and improves NAT throughput to keep connections fast and continuous



Wi-Fi Range

- **Ultimate Range Wi-Fi** – 8 high-performance antennas with a high-powered amplifier ensure the widespread Wi-Fi coverage and a stable connection
- **Wi-Fi with Beamforming** – Beamforming technology locates the connected devices and further improves the router's range and the signal strength to each mobile device, delivering a more reliable and efficient wireless connection



Reliability

- **Simultaneous Tri Band** – Separate Wi-Fi bands enable more devices to connect to your network without a drop in performance
- **Easy Bandwidth Management** – Advanced QoS makes it easier for you to manage the bandwidth of connected devices or applications

Features



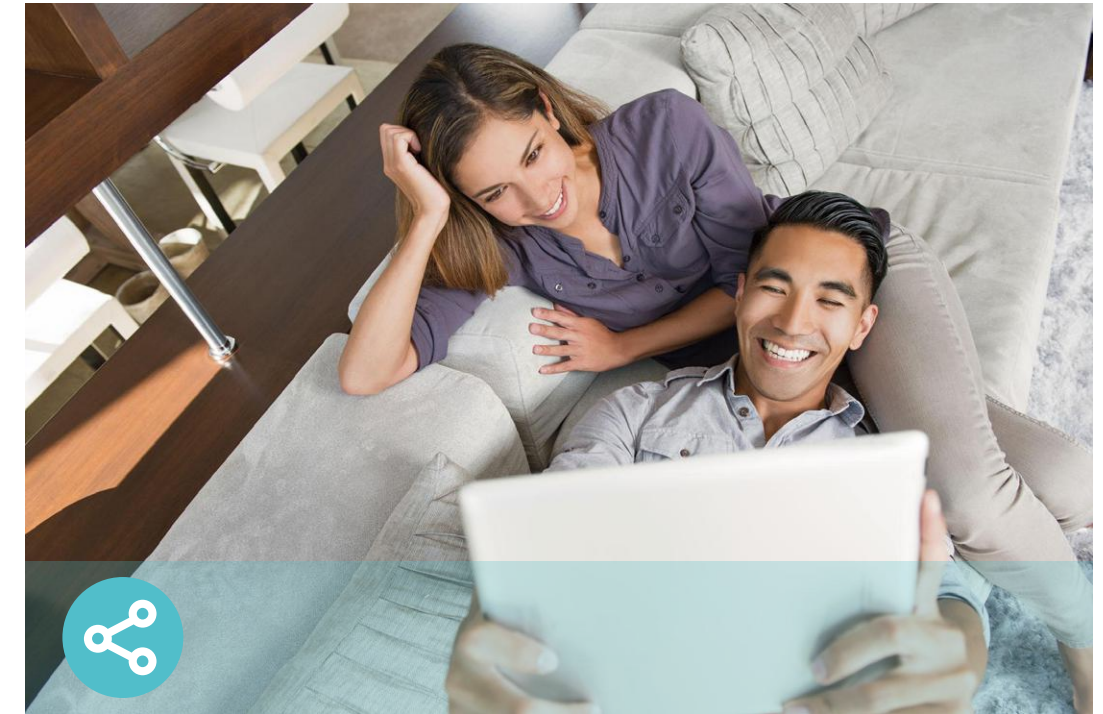
Ease of Use

- Intuitive Web UI – Ensures quick and simple Installation without hassle
- Fast Encryption – One-touch WPA wireless security encryption with the WPS button
- Easy On/Off – Turn on/off wireless radio using the Wi-Fi button; turn on/off LEDs using the LED button
- Power On/Off – Conveniently power on or off your router as required
- Hassle-free Management with Tether App – Network management is made easy with the TP-Link Tether App, available on any Android and iOS device
- Online Upgrade – Keeps you informed of the latest firmware and allows online upgrade on the web UI



Security

- Antivirus – Protect all connected devices in your home from viruses and malware
- Guest Network – Keep your main network secure by creating a separate network for friends and visitors
- Access Control – Establish a whitelist or blacklist to allow or restrict certain devices to access the internet
- Parental Controls – Restrict internet access time and contents for children devices
- Encryptions for Secure Network – WPA-PSK and WPA2-PSK encryptions provide active protection against security threats



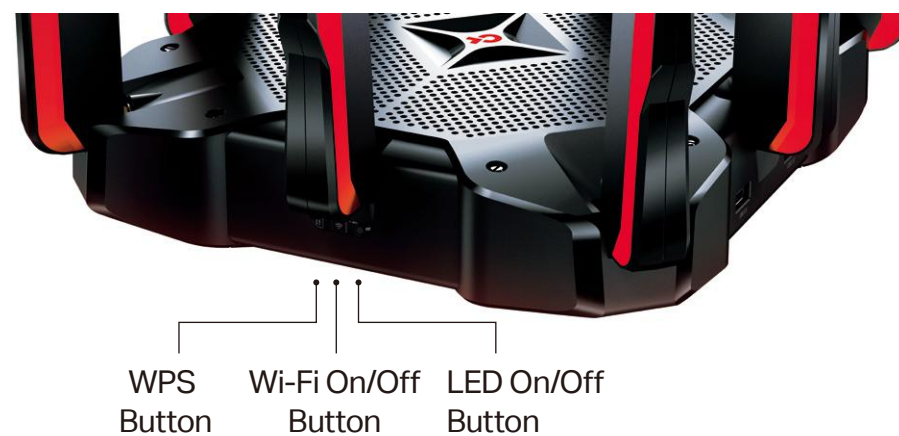
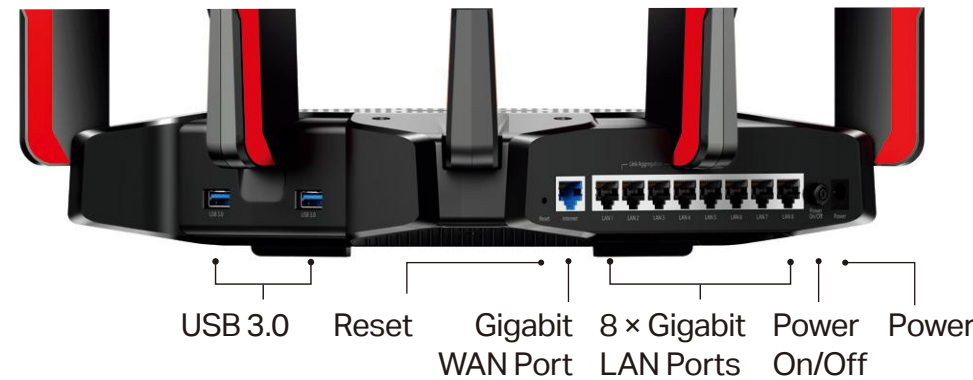
Easy Sharing

- Dual USB 3.0 Ports for Fast Sharing – Dual USB 3.0 ports make it easy to share photos, videos, and music across your home network. Through the router's FTP server, you can also access your files and media from network devices remotely
- 10x Faster Transfer Speed – The USB 3.0 port provides up to 10x faster USB hard drive access than previous generation USB 2.0 connections
- Built-in Print Server – Allows wireless printing from multiple computers (works in conjunction with a USB printer)
- Built-in Media Server – Allows you to play music, watch videos and view photos from any device on your network

Specifications

Hardware

- Ethernet Ports: 8 Gigabit LAN Ports, 1 Gigabit WAN Port
- USB Ports: 2 USB 3.0 Ports
- Buttons: Wi-Fi On/Off Button, LED On/Off Button, Power On/Off Button, Reset Button, WPS Button
- Antennas: 8 External Antennas
- External Power Supply: 12V/5A
- Dimensions (W x D x H): 240.5X240.5X55.3mm (9.47X9.47X2.18 in)



Wireless

- Wireless Standards: IEEE 802.11ac/n/a 5GHz, IEEE 802.11ac/n/g/b 2.4GHz
- Frequency: 2.4GHz, 5GHz-1 and 5GHz-2
- Signal Rate: 1000Mbps on 2.4GHz, 2167Mbps on 5GHz-1, 2167Mbps on 5GHz-2
- Transmit Power:
 - CE: <20dBm(2.4GHz), <23dBm(5.15GHz~5.35GHz); <30dBm(5.47GHz~5.725GHz)
 - FCC: <30dBm(2.4GHz & 5.15GHz~5.25GHz & 5.725GHz~5.825GHz)
- Reception Sensitivity:
 - 5GHz:
 - 11a 6Mbps: -94dBm, 11a 54Mbps: -76dBm
 - 11ac VHT20_MCS0: -96dBm, 11ac VHT20_MCS11: -64dBm
 - 11ac VHT40_MCS0: -93dBm, 11ac VHT40_MCS11: -61dBm
 - 11ac VHT80_MCS0: -89dBm, 11ac VHT80_MCS11: -58dBm,
 - 2.4GHz:
 - 11g 6Mbps: -97dBm, 11g 54Mbps: -79dBm
 - 11n HT20_MCS0: -98dBm, 11n HT20_MCS7: -77dBm
 - 11ac VHT20_MCS11: -66dBm, 11n HT40_MCS0: -95dBm
 - 11n HT40_MCS7: -75dBm, 11ac VHT40_MCS11: -64dBm
- Wireless Function: Enable/Disable Wireless Radio, WDS Bridge, WMM, Wireless Statistics
- Wireless Security: 64/128-bit WEP, WPA/WPA2, WPA-PSK/WPA2-PSK encryptions

Specifications

Software

- Quality of Service: Device and Application Prioritisation
- WAN Type: Dynamic IP/Static IP/PPPoE/PPTP(Dual Access)/L2TP(Dual Access)/BigPond
- Management: Access Control, Local Management, Remote Management
- DHCP: Server, DHCP Client List, Address Reservation
- Port Forwarding: Virtual Server, Port Triggering, UPnP, DMZ
- Dynamic DNS: DynDns, NO-IP, TP-Link
- Access Control: Parental Controls, Local Management Control, Host List, White List, Black List
- Firewall Security: DoS, SPI Firewall, IP and MAC Address Binding
- Protocols: IPv4, IPv6
- USB Sharing: Supports Samba(Storage)/FTP Server/Media Server/Printer Server
- Guest Network: 2.4GHz guest network x 1, 5GHz guest network x 2

Others

- Certification:
CE, FCC, RoHS
- System Requirements:
Microsoft Windows 98SE/NT/2000/XP/Vista™/7/8/8.1/10, MAC OS, NetWare, UNIX or Linux
Internet Explorer 11, Firefox 12.0, Chrome 20.0, Safari 4.0, or other Java-enabled browser
Cable or DSL Modem
Subscription with an internet service provider (for internet access)
- Environment:
Operating Temperature: 0°C~40°C (32°F ~104°F)
Storage Temperature: -40°C~70°C (-40°F ~158°F)
Operating Humidity: 10%~90% non-condensing
Storage Humidity: 5%~90% non-condensing
- Package Contents
Archer C5400X Wireless Router
Power Adapter
Ethernet Cable
Quick Installation Guide



For more information, please visit

<http://www.tp-link.com/en/products/details/Archer-C5400X.html>

or scan the QR code left

Attention: This device may only be used indoors in all EU member states and EFTA countries.

Specifications are subject to change without notice. All the brands and product names are trademarks or registered trademarks of their respective holders.

*Maximum wireless signal rates are the physical rates derived from IEEE Standard 802.11 specifications. Actual wireless data throughput and wireless coverage are not guaranteed and will vary as a result of 1) environmental factors, including building materials, physical objects, and obstacles, 2) network conditions, including local interference, volume and density of traffic, product location, network complexity, and network overhead, and 3) client limitations, including rated performance, location, connection, quality, and client condition.

*Use of MU-MIMO and 1024-QAM requires clients to also support those functions.

*A basic TP-Link HomeCare™, powered by Trend Micro™, package is included for 3 years from date of activation at no additional cost. It includes Parental controls, Quality of Service, and Antivirus. Deactivation of HomeCare™ will disable certain controls and protections. For a complete list of HomeCare™ functions, go to www.tp-link.com.