




AX6000 8-Stream Wi-Fi 6 Router


Faster. Broader.
Unstoppable.




Archer AX6000

 Warp-Speed Wi-Fi
up to 6000 Mbps[†]

 High-Speed Connection
2.5 Gbps WAN Port

 Connect More Devices
OFDMA + MU-MIMO[‡]

 Top-Notch Processing
1.8 GHz Quad-Core CPU

Highlights

Wi-Fi 6 Faster. Broader. Unstoppable.

The Archer AX6000, based on the next generation 802.11ax Wi-Fi technology, takes your Wi-Fi to the next level while being backwards compatible with 802.11a/b/g/n/ac Wi-Fi standards.



Gigabit Wi-Fi for 8K Streaming

Equipped dual advanced 4x4 structures with HT160 on the 5 GHz band, giving you full access to multiple 8K streaming and high-speed downloading.^{††}



Connect Numerous Devices

OFDMA and MU-MIMO transmit data to multiple devices simultaneously across 8 streams, drastically reducing lag and allowing more applications to run at the same time.[‡]



Smart Power Saving

Target Wake Time schedules the connection time of battery-powered devices to reduce their power consumption.[‡]

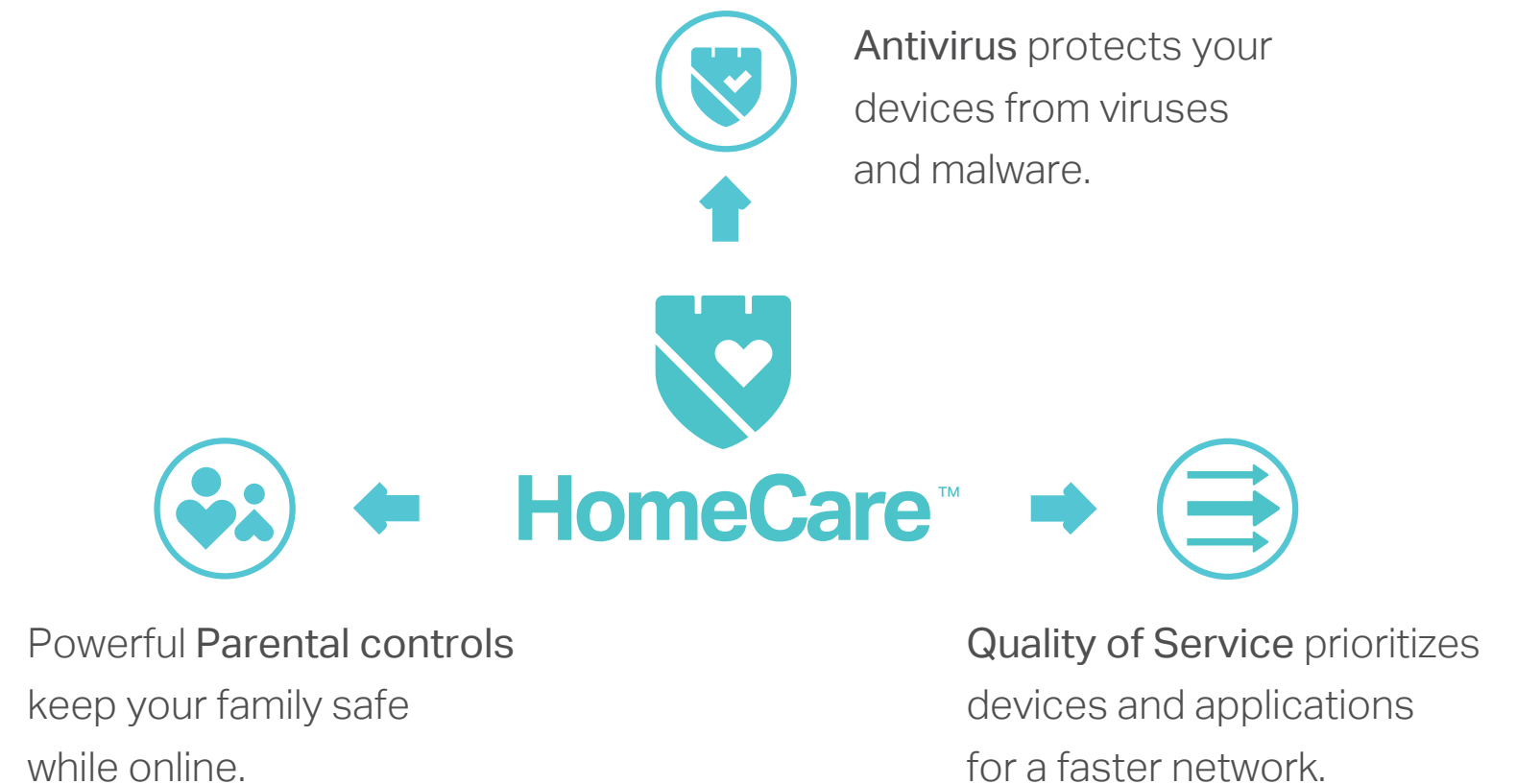


Backwards Compatible

Take your Wi-Fi to the next level while being backwards compatible with 802.11a/b/g/n/ac Wi-Fi standards.

Homecare for Comprehensive Home Threat Protection

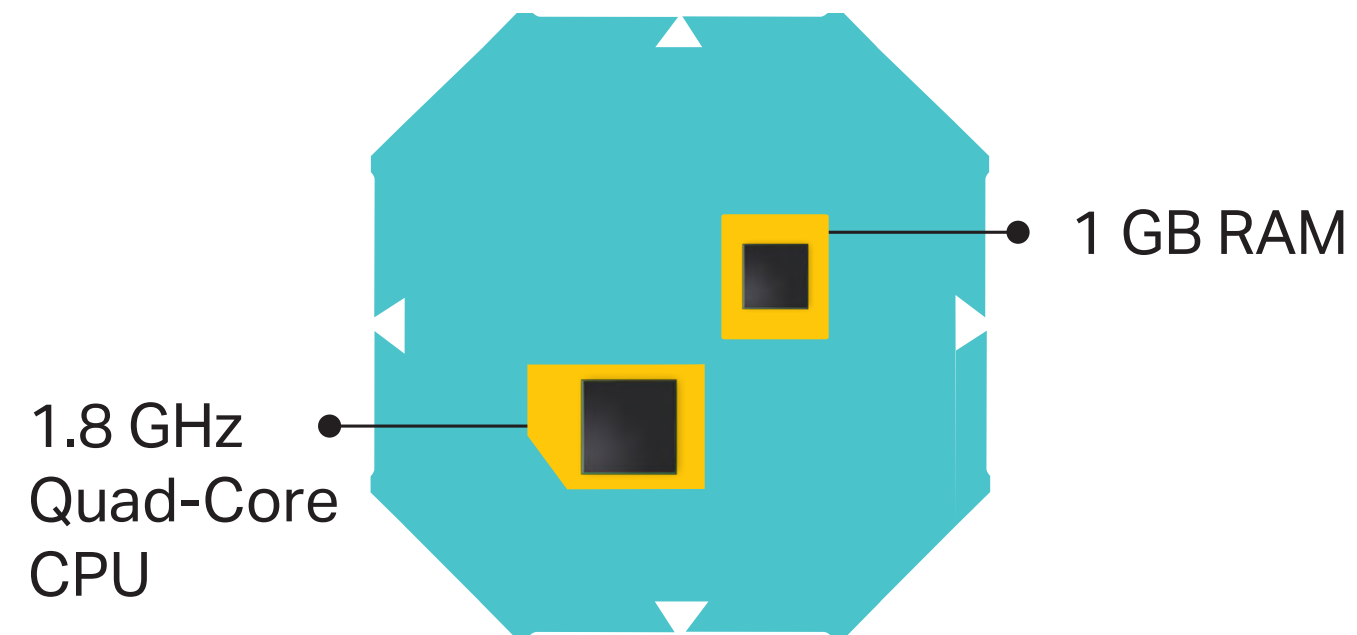
Defend your system from malicious threats that can sneak through downloads and file sharing. TP-Link HomeCare, protects every device from the latest cyber threats with powerful security, built-in antivirus, and cutting-edge intrusion prevention, comprehensively creating a highly protected smart home environment.



Highlights

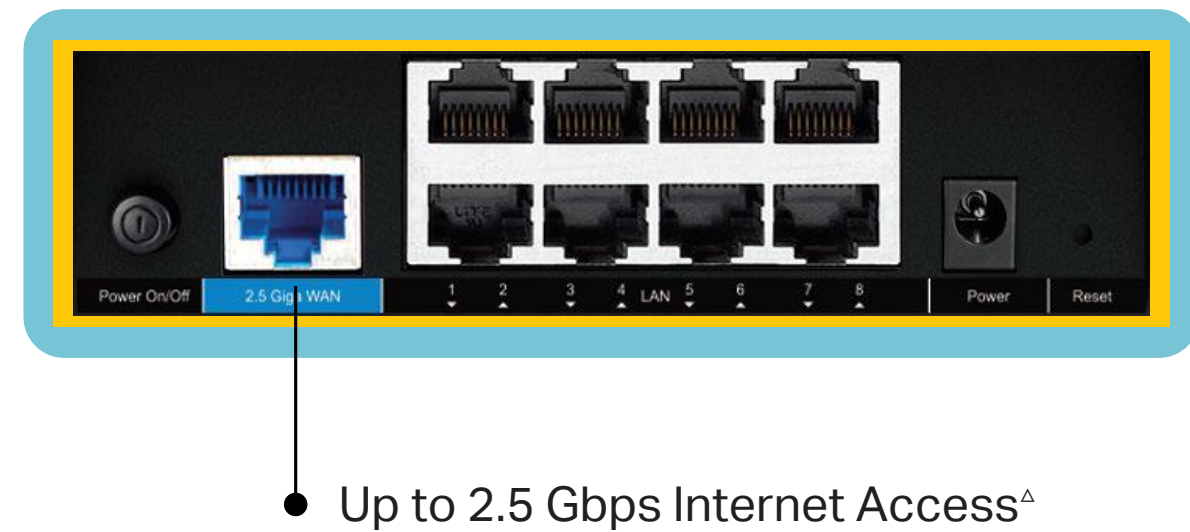
Top-Notch Processing

A top-notch 1.8 GHz 64 bit quad-core CPU and 1 GB RAM work tirelessly to process enormous data throughput and minimizes the lag within the home network, delivering a smooth online experience.



High-Speed Internet Access

Equipped with a 2.5 Gbps WAN port to break the Gigabit bottleneck between you and the internet service provider, enabling you to make the most of the ultra-fast Wi-Fi 6 system.

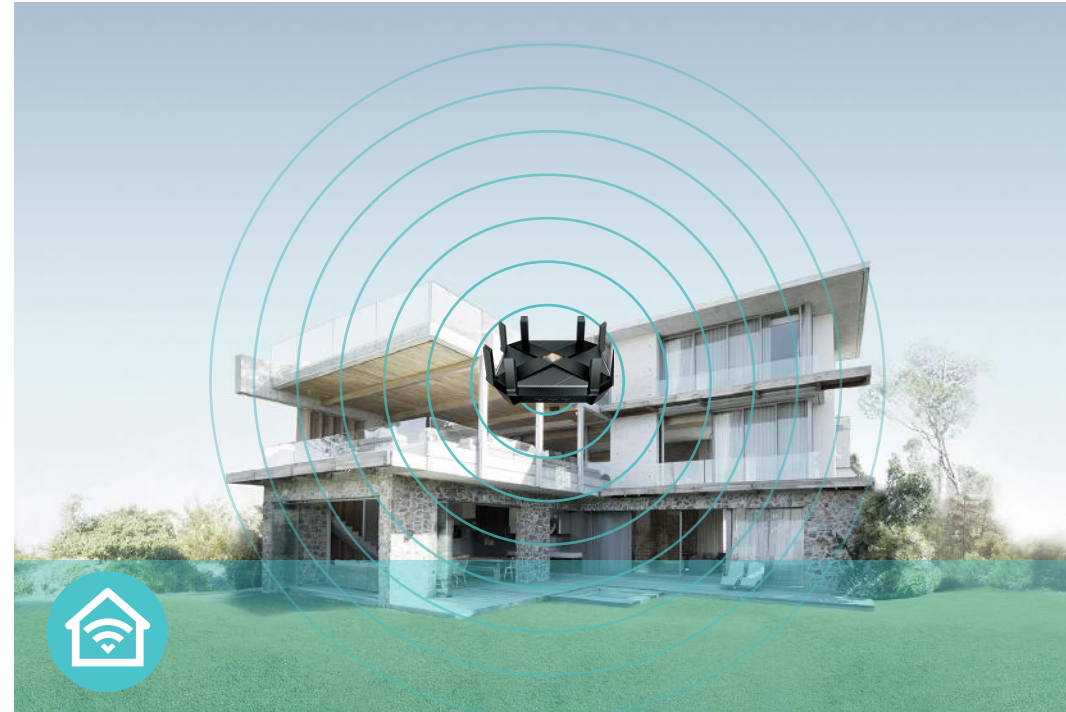


Features



Speed

- **AX Tech** – 802.11ax (also known as Wi-Fi 6) features advanced technologies including OFDMA, MU-MIMO and 1024QAM, drastically increasing the speed and efficiency of the entire network
- **Ultimate Wireless Speed** – 1148 Mbps on 2.4 GHz (802.11ax) + 4804 Mbps on 5 GHz (802.11ax)
- **1.8 GHz 64-bit Quad-Core CPU** – Balances the demands of your devices and improves NAT throughput to keep connections fast and continuous
- **Link Aggregation** – Doubles the connection speeds to an external storage devices for faster streaming and data backup
- **Accelerated VPN Access** – Securely connects to private networks providing 5× faster OpenVPN and PPTP VPN connections



Wi-Fi Range

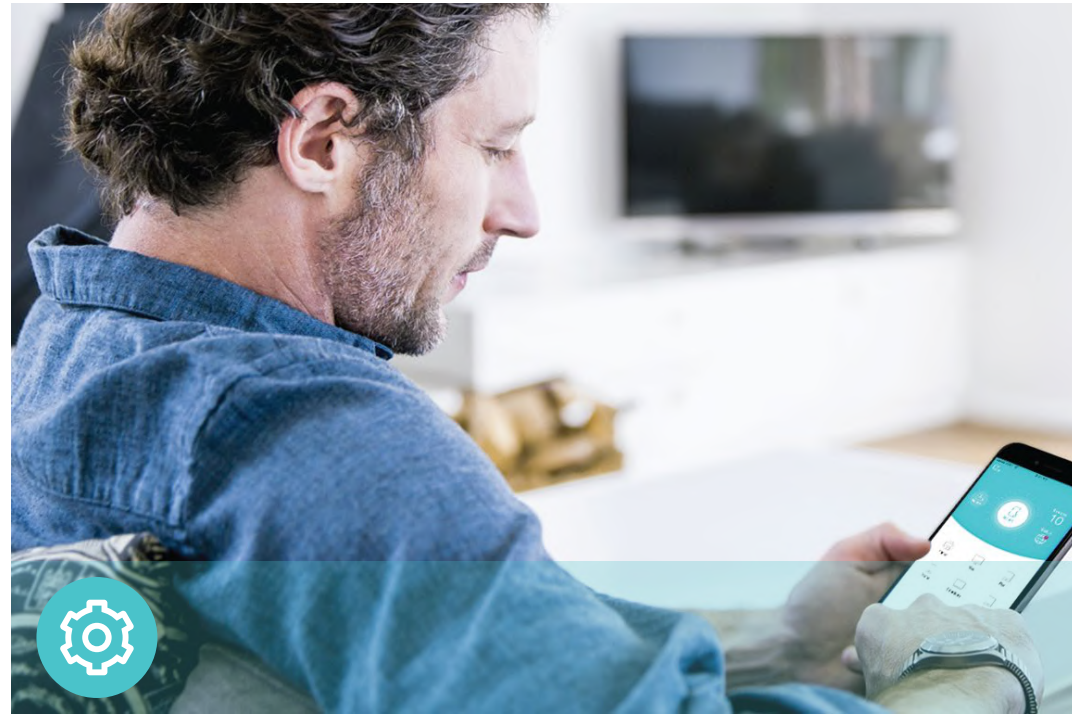
- **Ultimate Range Wi-Fi** – 8 high-gain external antennas deliver a Wi-Fi signal to every corner of your home, making all of your connections more efficient and stable.
- **Range Boost** – Greatly enhances receiving sensitivity to deliver a more stable router-client link
- **Beamforming Technology** – Concentrates Wi-Fi signals towards individual devices to ensure stronger connections



Reliability

- **Airtime Fairness** – Balances bandwidth of connected devices to improve overall throughput and efficiency
- **Smart Connect** – Intelligently switches each device's connection to the optimum available Wi-Fi band
- **Easy Bandwidth Management** – Advanced QoS makes it easier for you to manage the bandwidth of connected devices or applications

Features



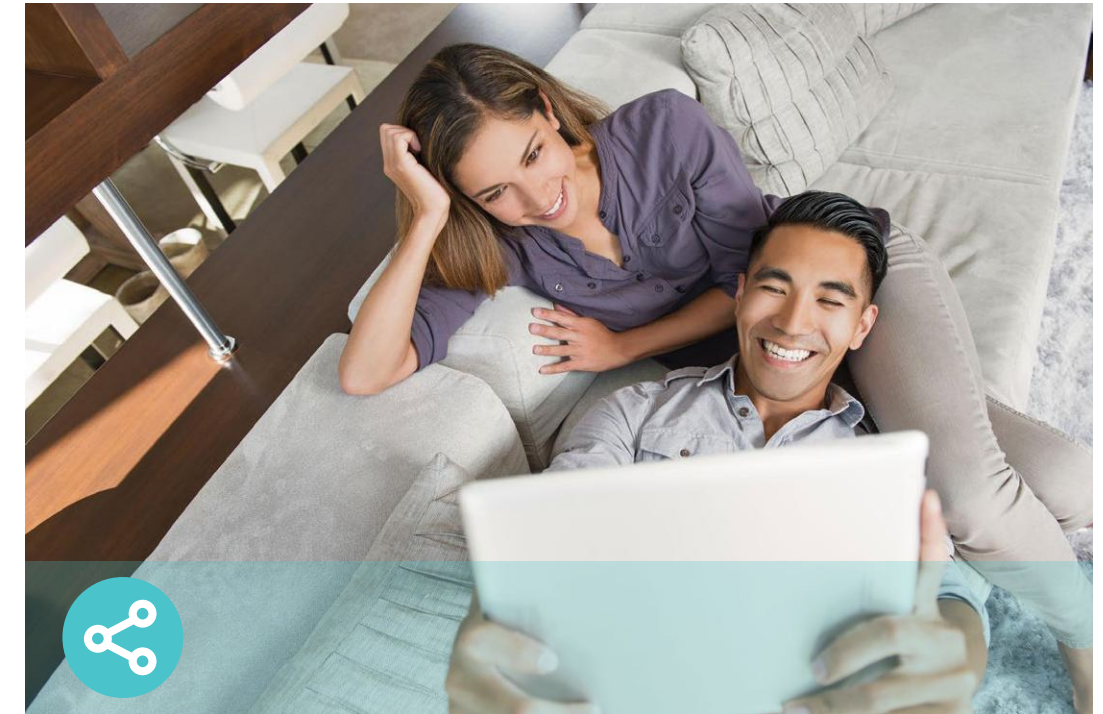
Ease of Use

- Intuitive Web UI – Ensures quick and simple Installation without hassle
- Fast Encryption – One-touch wireless security encryption with the WPS button
- Easy On/Off – Turn on/off wireless radio using the Wi-Fi button; turn on/off LEDs using the LED button
- Power On/Off – Conveniently power on or off your router as required
- Hassle-free Management with Tether App – Network management is made easy with the TP-Link Tether App, available on any Android and iOS device
- Bluetooth Onboarding – Open phone's bluetooth and quickly sets up the network via the Tether app



Security

- Antivirus – Protects all connected devices in your home from viruses and malware
- Guest Network – Keeps your main network secure by creating a separate network for friends and visitors
- Access Control – Establishes a whitelist or blacklist to allow or restrict certain devices to access the internet
- Parental Controls – Restricts internet access time and contents for children devices
- Encryptions for Secure Network – WPA/WPA2-Personal, WPA2/WPA3-Personal, WPA/WPA2-Enterprise encryptions provide active protection against security threats



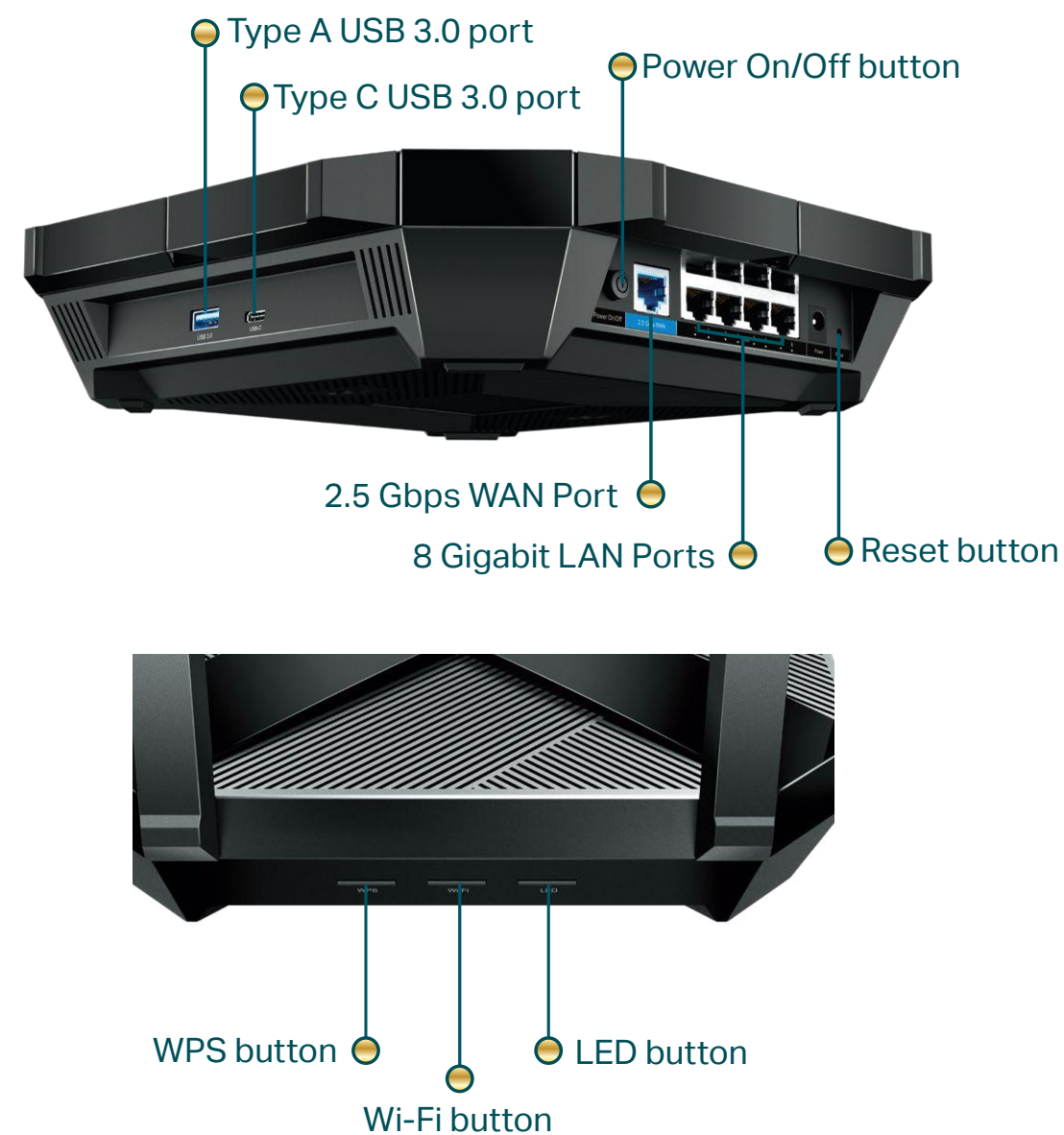
Easy Sharing

- Type C & Type A USB 3.0 Ports – Provide data transfers up to 10× faster than a traditional USB 2.0 port.
- Built-in Media Server – Allows you to play music, watch videos and view photos from any device on your network

Specifications

Hardware

- Ethernet Ports: One 2.5 Gbps WAN Port, Eight Gigabit LAN Ports
- USB Ports: One Type A & One Type C USB 3.0 Ports
- Buttons: WPS Button, Wi-Fi On/Off Button, LED On/Off Button, Power On/Off Button, Reset Button
- Antennas: 8 High-Performance External Antennas
- External Power Supply: 12V/4A
- Dimensions (W x D x H): 10.3×10.3×2.4 in (261.2×261.2×60.2 mm)



Wireless

- Wireless: 1148 Mbps on 2.4 GHz (802.11ax) + 4804 Mbps on 5 GHz (802.11ax), compatible with 802.11a/b/g/n/ac Wi-Fi standards
- Frequency: 2.4 GHz and 5 GHz
- Transmit Power:
 - CE: <20dBm(2.4 GHz), <23dBm(5.15 GHz~5.35 GHz); <30dBm(5.47 GHz~5.725 GHz)
 - FCC: <30dBm(2.4 GHz & 5.15 GHz~5.25 GHz & 5.725 GHz~5.825 GHz)
- Reception Sensitivity:
 - 5 GHz:
 - 11a 6Mbps: -97dBm, 11a 54Mbps:-79dBm
 - 11ac VHT20_MCS0:-96dBm, 11ac VHT20_MCS11:-66dBm
 - 11ac VHT40_MCS0:-94dBm, 11ac VHT40_MCS11:-63dBm
 - 11ac VHT80_MCS0:-91dBm, 11ac VHT80_MCS11:-60dBm
 - 11ac VHT160_MCS0:-88dBm, 11ac VHT160_MCS11:-55dBm
 - 11ax HE20_MCS0:-95dBm, 11ax HE20_MCS11:-63dBm
 - 11ax HE40_MCS0:-92dBm, 11ax HE40_MCS11:-60dBm
 - 11ax HE80_MCS0:-89dBm, 11ax HE80_MCS11:-58dBm
 - 11ax HE160_MCS0:-85dBm, 11ax HE160_MCS11:-55dBm
 - 2.4 GHz:
 - 11g 6Mbps: -97dBm, 11a 54Mbps:-79dBm
 - 11n HT20_MCS0:-97dBm, 11n HT20_MCS7:-78dBm
 - 11n HT40_MCS0:-95dBm, 11n HT40_MCS7:-75dBm
 - 11ac VHT20_MCS0:-96dBm, 11ac VHT20_MCS11:-67dBm
 - 11ac VHT40_MCS0:-94dBm, 11ac VHT40_MCS11:-64dBm
 - 11ax HE20_MCS0:-96dBm, 11ax HE20_MCS11:-64dBm
 - 11ax HE40_MCS0:-93dBm, 11ax HE40_MCS11:-61dBm
- Wireless Function: Enable/Disable Wireless Radio, WDS Bridge, WMM, Wireless Statistics
- Wireless Security: WPA/WPA2-Personal, WPA2/WPA3-Personal, WPA/WPA2-Enterprise

Specifications

Software

- Quality of Service: Device and Application Prioritisation
- WAN Type: Dynamic IP/Static IP/PPPoE/PPTP(Dual Access)/L2TP(Dual Access)
- Management: Access Control, Local Management, Remote Management
- DHCP: Server, DHCP Client List, Address Reservation
- Port Forwarding: Virtual Server, Port Triggering, UPnP, DMZ
- Dynamic DNS: DynDns, NO-IP, TP-Link
- Access Control: Parental Controls, Local Management Control, Host List, White List, Black List
- Firewall Security: SPI Firewall, IP and MAC Address Binding
- Protocols: IPv4, IPv6
- USB Sharing: Supports Samba(Storage)/FTP Server/Media Server
- Guest Network: 2.4 GHz Guest Network, 5 GHz Guest Network

Others

- Certification:
CE, FCC, RoHS
- System Requirements:
Microsoft Windows 98SE/NT/2000/XP/Vista™/7/8/8.1/10, MAC OS, NetWare, UNIX or Linux

Internet Explorer 11, Firefox 12.0, Chrome 20.0, Safari 4.0, or other Java-enabled browser

Cable or DSL Modem

Subscription with an internet service provider (for internet access)
- Environment:
Operating Temperature: 0°C~40°C (32°F ~104°F)
Operating Humidity: 10%~90% non-condensing
- Package Contents
Wireless Router Archer AX6000

Power Adapter

RJ45 Ethernet Cable

Quick Installation Guide



For more information, please visit

<http://www.tp-link.com/products/details/Archer-AX6000.html>

or scan the QR code left

Attention: This device may only be used indoors in all EU member states and EFTA countries.

[†]Maximum wireless signal rates are the physical rates derived from IEEE Standard 802.11 specifications. Actual wireless data throughput and wireless coverage are not guaranteed and will vary as a result of network conditions, client limitations, and environmental factors, including building materials, obstacles, volume and density of traffic, and client location.

[‡]Use of 802.11ax (Wi-Fi 6) and its features including OFDMA, HT160, TWT, and 1024-QAM requires clients to also support corresponding features. HT160 only works on the 5 GHz band. HT160 may be unavailable in the 5 GHz band in some regions/countries due to regulatory restrictions. Actual power reduction by Target Wake Time may vary as a result of network conditions, client limitations, and environmental factors.

[^]2.5 Gbps internet access requires compatible service plan and equipment.

^{*}Use of MU-MIMO requires clients to also support MU-MIMO.

^{**}Use of WPA3 requires clients to also support the corresponding feature.

Specifications are subject to change without notice. ©2021 TP-Link