

[Get a Quote](#)

## Overview

---

- \* **Dual-Band Wi-Fi 6:** Equipped with the latest wireless technology, Wi-Fi 6, for faster speeds, greater capacity, and reduced network congestion.
- \* **Next-Gen 1.8 Gbps Speeds:** Enjoy smooth streaming, downloading, and gaming all without buffering with Wi-Fi speeds of 1.8 Gbps.
- \* **Connect More Devices:** Wi-Fi 6 technology communicates more data to more devices using revolutionary OFDMA technology while simultaneously reducing lag.
- \* **Quad-Core Processing:** The 1.5 GHz quad-core CPU ensures communications between your router and all connected devices are smooth.
- \* **Extensive Coverage:** Beamforming, independent FEM, and four antennas combine to deliver focused reception to devices far away.
- \* **Increased Battery Life:** Target Wake Time technology reduces your devices' power consumption to extend their battery life.
- \* **USB Easy Sharing:** A USB 2.0 Port enables easy file sharing within your network or building private Cloud Storage.
- \* **Easy Setup:** Set up your router in minutes with the powerful TP-Link Tether App.
- \* **Backward Compatible:** Supports all previous 802.11 standards and all Wi-Fi devices.



# Faster Speeds. More Connected Devices. Powerful Processing.



Dual-Band  
Wi-Fi 6



Up to 1.8 Gbps  
Speeds



Connect More, Stay  
Fast



Quad-Core CPU



Reduced Power  
Consumption



Refined Password  
Security

## The Wi-Fi 6 Experience

The latest generation of WiFi technology brings faster speeds, less lag, and higher capacity, enabling more simultaneous connections on your home network.<sup>6</sup>



# Dual-Band Wi-Fi 6 Up to 1.8 Gbps

Every application feels more fluid with drastically improved WiFi speeds. Both 2.4 GHz band and 5 GHz band get upgraded to the latest generation—perfect for 4K streaming, online gaming, and fast downloading.<sup>1</sup>

Wi-Fi 4, 2.4 GHz  
40 MHz, 2x2

300 Mbps

Wi-Fi 5, 5 GHz  
80 MHz, 2x2

867 Mbps

Wi-Fi 6, 2.4 GHz  
40 MHz, 2x2

574 Mbps

Wi-Fi 6, 5 GHz  
80 MHz, 2x2

1201 Mbps

90% Faster

40% Faster



## Extensive WiFi Coverage with Advanced Technologies

Beamforming technology, Independent Front-End Module, and four high-gain antennas combine to adapt WiFi coverage to perfectly fit your home and concentrate signal strength towards your devices.



Beamforming

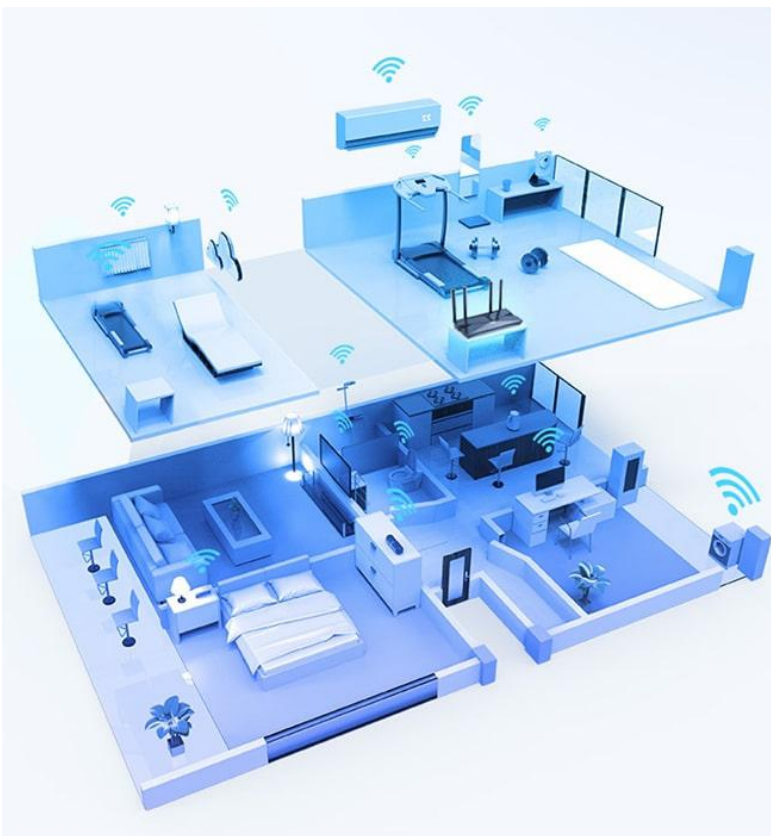


Independent FEM



4x Antennas





## Connect More, Stay Fast

Easily handle dozens of devices streaming and gaming at the same time—OFDMA future-proofs your home networks by providing greater capacity to connect more devices.<sup>3</sup>

### OFDMA

OFDMA separates a single spectrum into multiple units and enables different devices to share one transmission stream, increasing efficiency and reducing latency.

### 1.5 GHz Quad-Core CPU

## Powerful Processing for Minimal Latency

A powerful 1.5 GHz quad-core CPU generates minimal latency within your network even under heavy load of transmission. Experience a faster response time for every website click or online video playback.

Traditional 2x2 AC Router

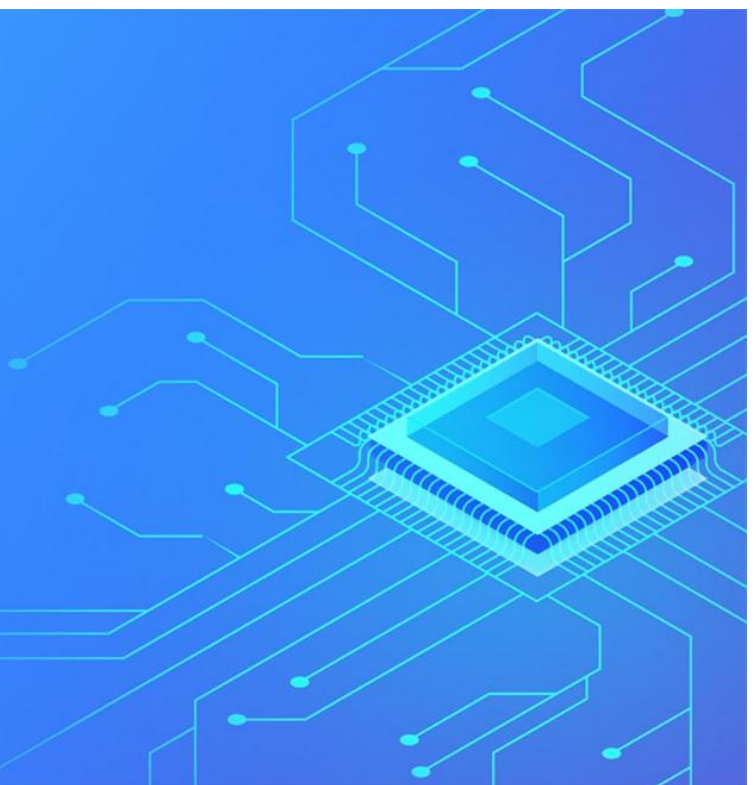
### 0.9 GHz

Single-Core CPU

Archer AX20

### 1.5 GHz

Quad-Core CPU



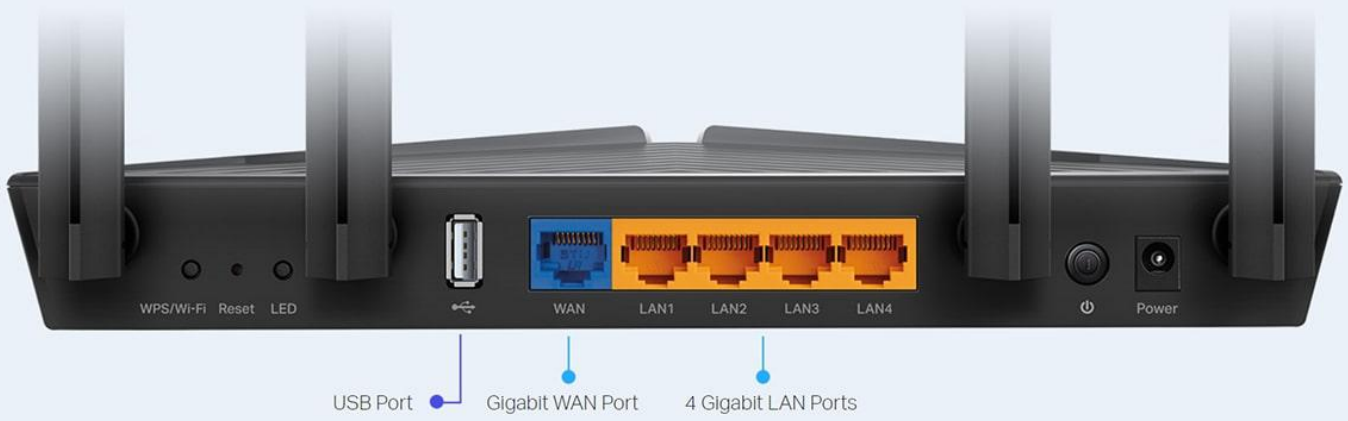
# Versatile Connectivity

## Easy File Sharing

Share music, movies, and documents easily on every device across your home network.

## Full Gigabit Ports

Connect to your devices using a wired network for robust stability.



## WPA3—New Level of Cyber Security

The latest WiFi security protocol, WPA3, brings new capabilities to improve cybersecurity in personal networks. More secure encryption in WiFi password safety and enhanced protection against brute-force attacks combine to safeguard your home WiFi.<sup>3</sup>



# TP-Link OneMesh™ : Flexibly Create a Whole-Home Wi-Fi

OneMesh™ is a simple way to form a Mesh network with a single Wi-Fi name for seamless whole-home coverage. Just connect a OneMesh™ range extender to a OneMesh™ router. No more searching around for a stable connection.



## Wi-Fi Dead-Zone Killer

Eliminate weak signal areas with Wi-Fi coverage for the whole house



## Smart Roaming

Uninterrupted streaming when moving around your home



## One Wi-Fi Name

No more switching Wi-Fi network names



## Unified Management

Manage the whole-home Wi-Fi by managing the central node via Tether app/Web UI

### Traditional Router with Extender

- Wi-Fi
- Router
- Extender



### OneMesh™ Router + Range Extender

- Wi-Fi
- Whole Home



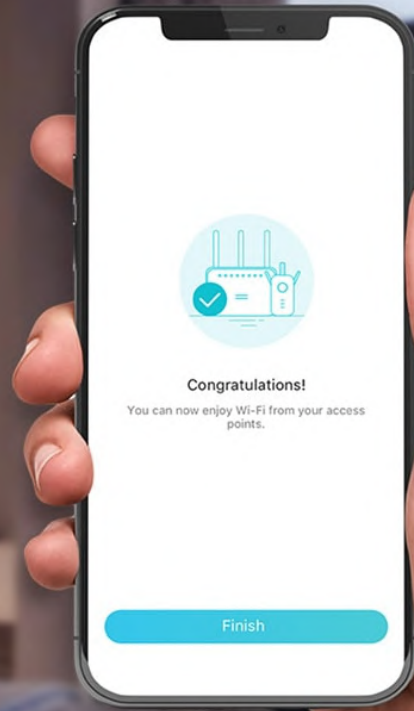
## Enjoy a Mesh Network with Your Existing Router

Want a Mesh network? Hesitate on whether to replace your existing router and buy a Mesh set?  
TP-Link OneMesh™ resolves your dilemma.



## Easy Setup and Use

Whether you prefer the intuitive Tether App or the powerful web interface, you can set up your Archer AX20 in minutes. The Tether App allows you to manage network settings from any Android or iOS device.



### Note:

1. Maximum wireless transmission rates are the physical rates derived from IEEE Standard 802.11 specifications. Range and coverage specifications are based upon test results under normal usage conditions. Actual wireless transmission rate and wireless coverage are not guaranteed, and will vary as a result of 1) environmental factors, including building materials, physical objects and obstacles, 2) network conditions, including local interference, volume and density of traffic, product location, network complexity, and network overhead and 3) client limitations, including rated performance, location, connection quality, and client condition.
2. Claims about 802.11ax Wi-Fi technology are based on comparisons of the expected maximum theoretical data rates for one spatial stream using 802.11ax at 160 MHz (1201 Mbps) as opposed to one spatial stream using 802.11ac at 80 MHz (433 Mbps) as documented in IEEE 802.11ax draft 3.0 spec and IEEE 802.11-2016 wireless standard specifications, and require the use of similarly configured 802.11ax wireless network routers.  
Use of 802.11ax Wi-Fi standard requires clients to also support the 802.11ax Wi-Fi standard.
3. Use of MU-MIMO, DL/UL OFDMA, TWT, WPA3 and 1024QAM requires clients to also support those functions.
4. Capacity refers to overall average throughput. This amendment defines standardized modifications to both the IEEE 802.11 physical layers (PHY) and the IEEE 802.11 Medium Access Control layer (MAC) that enable at least one mode of operation capable of supporting at least four times improvement in the average throughput per station (measured at the MAC data service access point) in a dense deployment scenario, while maintaining or improving the power efficiency per station.
5. Saving clients' battery power requires clients to also support the 802.11ax Wi-Fi standard. Actual power reduction may vary as a result of network conditions, client limitations, and environmental factors.
6. This router may not support all the mandatory features as ratified in Draft 3.0 of IEEE 802.11AX specification.

### Get more information

Do you have any question about the Archer AX20?

Contact us now via [Live Chat](#) or [sales@router-switch.com](mailto:sales@router-switch.com)

## Specification

Archer AX20 Specification	
Wireless	
Standards	Wi-Fi 6 IEEE 802.11ax/ac/n/a 5 GHz IEEE 802.11ax/n/b/g 2.4 GHz

<b>WiFi Speeds</b>	<b>AX1800</b> 5 GHz: 1201 Mbps (802.11ax) 2.4 GHz: 574 Mbps (802.11ax)
<b>WiFi Range</b>	<b>3 Bedroom Houses</b> 4× Fixed High-Performance Antennas Multiple antennas form a signal-boosting array to cover more directions and large areas  Beamforming Concentrates wireless signal strength towards clients to expand WiFi range  High-Power FEM Improves transmission power to strengthen signal coverage
<b>WiFi Capacity</b>	<b>High</b> Dual-Band Allocate devices to different bands for optimal performance  OFDMA Simultaneously communicates with multiple Wi-Fi 6 clients  Airtime Fairness Improves network efficiency by limiting excessive occupation  4 Streams Connect your devices to more bandwidth
<b>Working Modes</b>	Router Mode Access Point Mode
<b>Hardware</b>	
<b>Processor</b>	1.5 GHz Quad-Core CPU
<b>Ethernet Ports</b>	1× Gigabit WAN Port 4× Gigabit LAN Ports
<b>USB Support</b>	1× USB 2.0 Port  Supported Partition Formats: NTFS, exFAT, HFS+, FAT32  Supported Functions: Apple Time Machine FTP Server Media Server Samba Server
<b>Buttons</b>	WPS/Wi-Fi Button Power On/Off Button LED On/Off Button Reset Button
<b>Power</b>	12 V 1.5 A
<b>Security</b>	
<b>WiFi Encryption</b>	WPA WPA2 WPA3 WPA/WPA2-Enterprise (802.1x)
<b>Network Security</b>	SPI Firewall Access Control IP & MAC Binding Application Layer Gateway
<b>Guest Network</b>	1× 5 GHz Guest Network 1× 2.4 GHz Guest Network
<b>VPN Server</b>	OpenVPN PPTP
<b>Software</b>	



<b>Protocols</b>	IPv4 IPv6
<b>OneMesh™</b>	OneMesh™ Supported Without replacing your existing devices or buying a whole new WiFi ecosystem, OneMesh™ helps you create a more flexible network that covers your entire home with TP-Link OneMesh™ products.
<b>Parental Controls</b>	URL Filtering Time Controls
<b>WAN Types</b>	Dynamic IP Static IP PPPoE PPTP L2TP
<b>Quality of Service</b>	QoS by Device
<b>Cloud Service</b>	Auto Firmware Upgrade OTA Firmware Upgrade TP-Link ID DDNS
<b>NAT Forwarding</b>	Port Forwarding Port Triggering DMZ UPnP
<b>IPTV</b>	IGMP Proxy IGMP Snooping Bridge Tag VLAN
<b>DHCP</b>	Address Reservation DHCP Client List Server
<b>DDNS</b>	TP-Link NO-IP DynDNS
<b>Management</b>	Tether App Webpage
<b>Physical</b>	
<b>Dimensions (WxDxH)</b>	10.2 × 5.3 × 1.5 in (260.2 × 135.0 × 38.6 mm)
<b>Package Contents</b>	Wi-Fi Router Archer AX20 Power Adapter RJ45 Ethernet Cable Quick Installation Guide
<b>Other</b>	
<b>System Requirements</b>	Internet Explorer 11+, Firefox 12.0+, Chrome 20.0+, Safari 4.0+, or other JavaScript-enabled browser Cable or DSL Modem (if needed) Subscription with an internet service provider (for internet access)
<b>Certifications</b>	FCC
<b>Environment</b>	Operating Temperature: 0 ~40 (32 ~104 ) Storage Temperature: -40 ~70 (-40 ~158 ) Operating Humidity: 10%~90% non-condensing Storage Humidity: 5%~90% non-condensing
<b>Test Data</b>	
<b>WiFi Transmission Power</b>	FCC: <30dBm(2.4 GHz & 5.15 GHz~5.825 GHz)

#### WiFi Reception Sensitivity

5 GHz:  
11a 6Mbps:-97dBm  
11a 54Mbps:-79dBm  
11ac VHT20\_MCS0:-96dBm  
11ac VHT20\_MCS11:-66dBm  
11ac VHT40\_MCS0:-94dBm  
11ac VHT40\_MCS11:-63dBm  
11ac VHT80\_MCS0:-91dBm  
11ac VHT80\_MCS11:-60dBm  
11ax HE20\_MCS0:-95dBm  
11ax HE20\_MCS11:-63dBm  
11ax HE40\_MCS0:-92dBm  
11ax HE40\_MCS11:-60dBm  
11ax HE80\_MCS0:-89dBm  
11ax HE80\_MCS11:-58dBm  
2.4 GHz:  
11g 6Mbps:-97dBm  
11n HT20\_MCS0:-97dBm  
11n HT20\_MCS7:-78dBm  
11n HT40\_MCS0:-95dBm  
11n HT40\_MCS7:-75dBm  
11ac VHT20\_MCS0:-96dBm  
11ac VHT20\_MCS11:-67dBm  
11ac VHT40\_MCS0:-94dBm  
11ac VHT40\_MCS11:-64dBm  
11ax HE20\_MCS0:-96dBm  
11ax HE20\_MCS11:-64dBm  
11ax HE40\_MCS0:-93dBm  
11ax HE40\_MCS11:-61dBm

## Want to Buy

Order Now

Get a Quote

## Why Router-switch.com

As a leading network hardware supplier, Router-switch.com focuses on original new ICT equipment of [Cisco](#), [Huawei](#), [HPE](#), [Dell](#), [Hikvision](#), [Juniper](#), [Fortinet](#), etc.



200+

Countries we Sold



18,000+

Customers Trusted



\$20,000,000

Inventory Available



50%-98%

Off Global List Price



100%

Safe Online Shopping

## Contact Us

- Tel: +1-626-655-0998 (USA) +852-3050-1066 / +852-3174-6166
- Fax: +852-3050-1066 (Hong Kong)
- Email: [sales@router-switch.com](mailto:sales@router-switch.com)