



AC1900 Smart Wi-Fi Router

High-Speed Wi-Fi for Faster
Connections Across Your Home



Archer A9



1300Mbps 5GHz +
600Mbps 2.4GHz



Boosted
Coverage



Faster Wi-Fi
with MU-MIMO



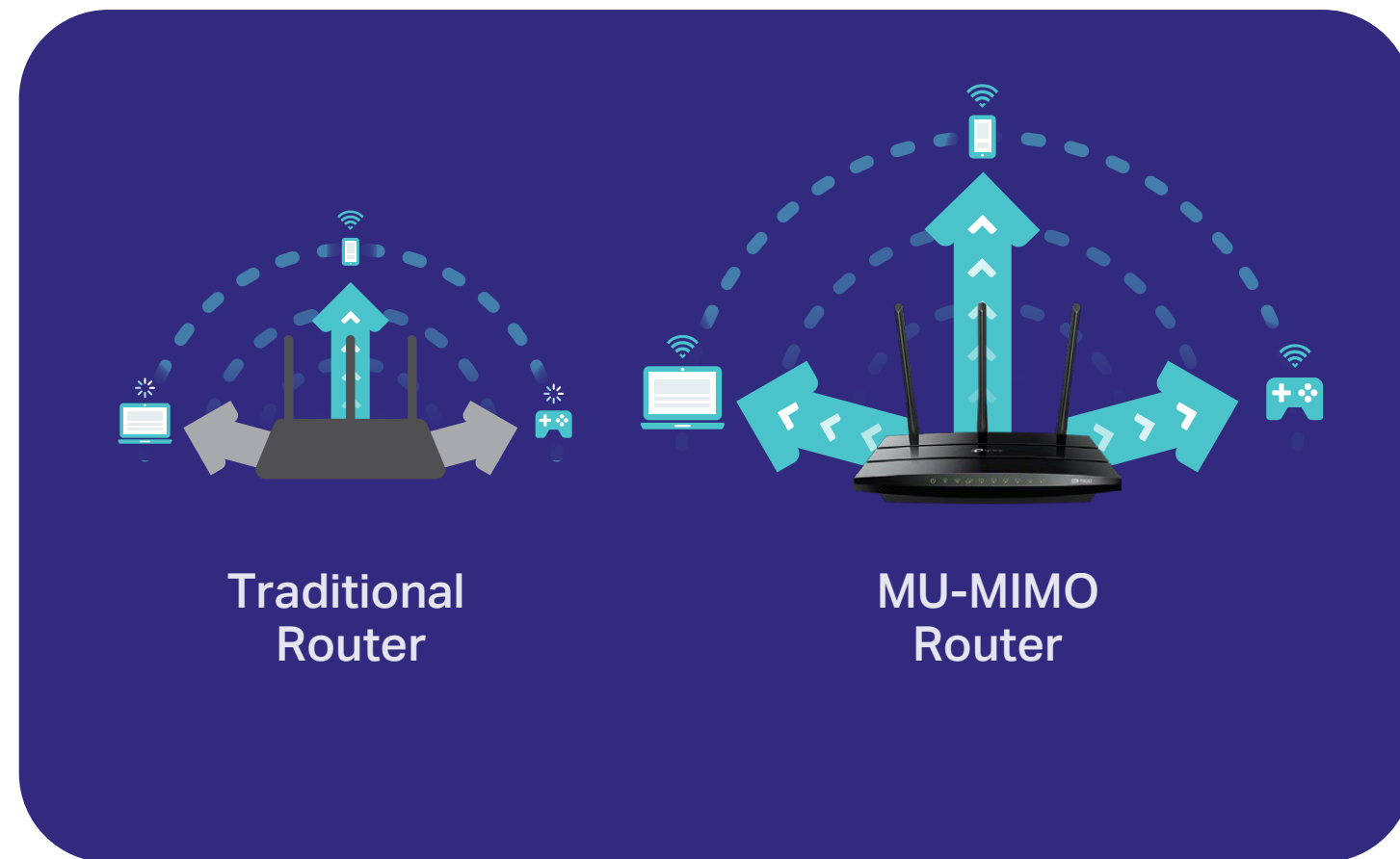
Smart
Connect



Full
Gigabit Ports

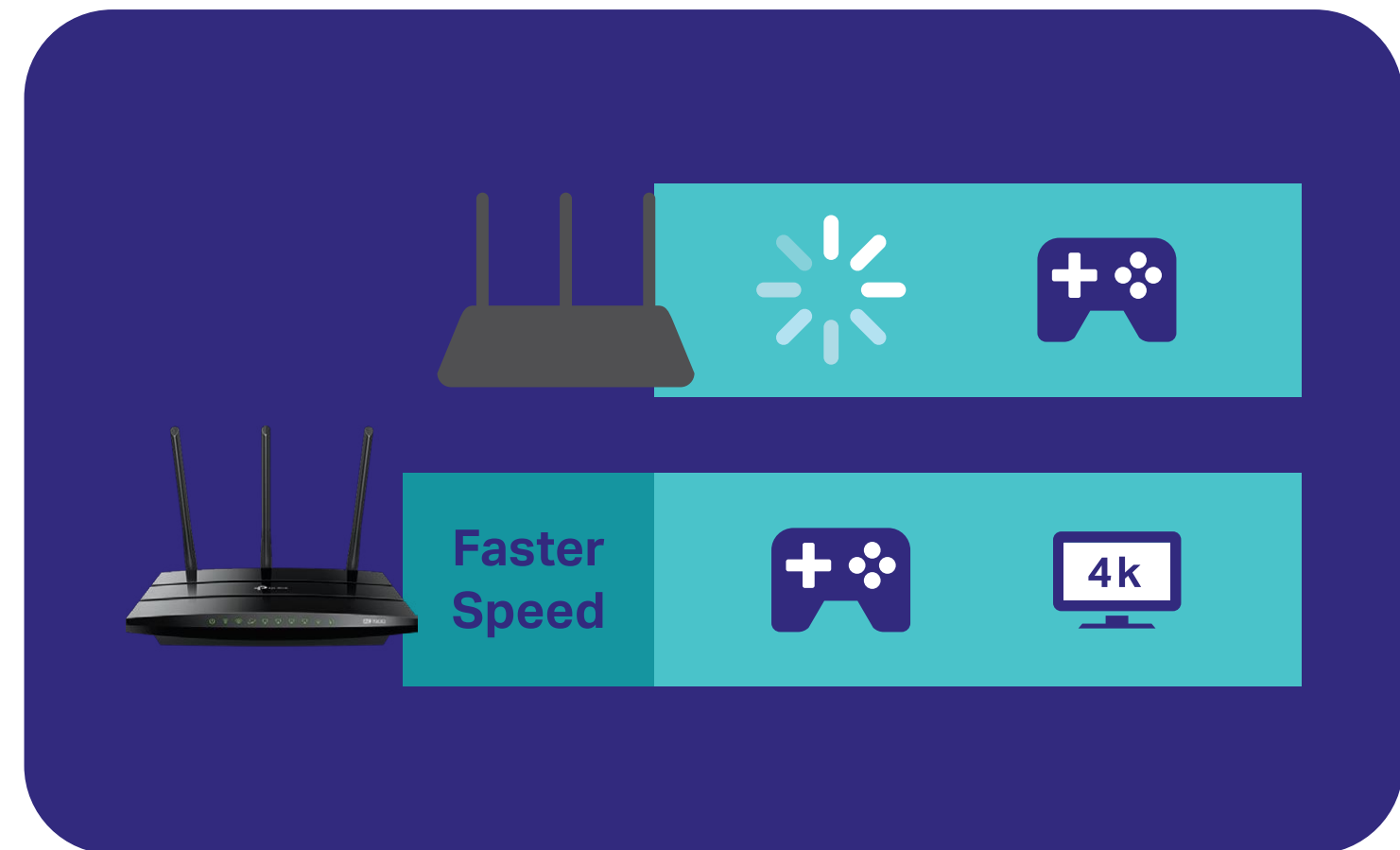
Highlights

Fully Enhanced Wi-Fi Performance by 802.11ac Wave2



MU-MIMO

MU-MIMO technology serves multiple devices at once; reducing wait time, increasing Wi-Fi throughput for every device, and making each stream more efficient.

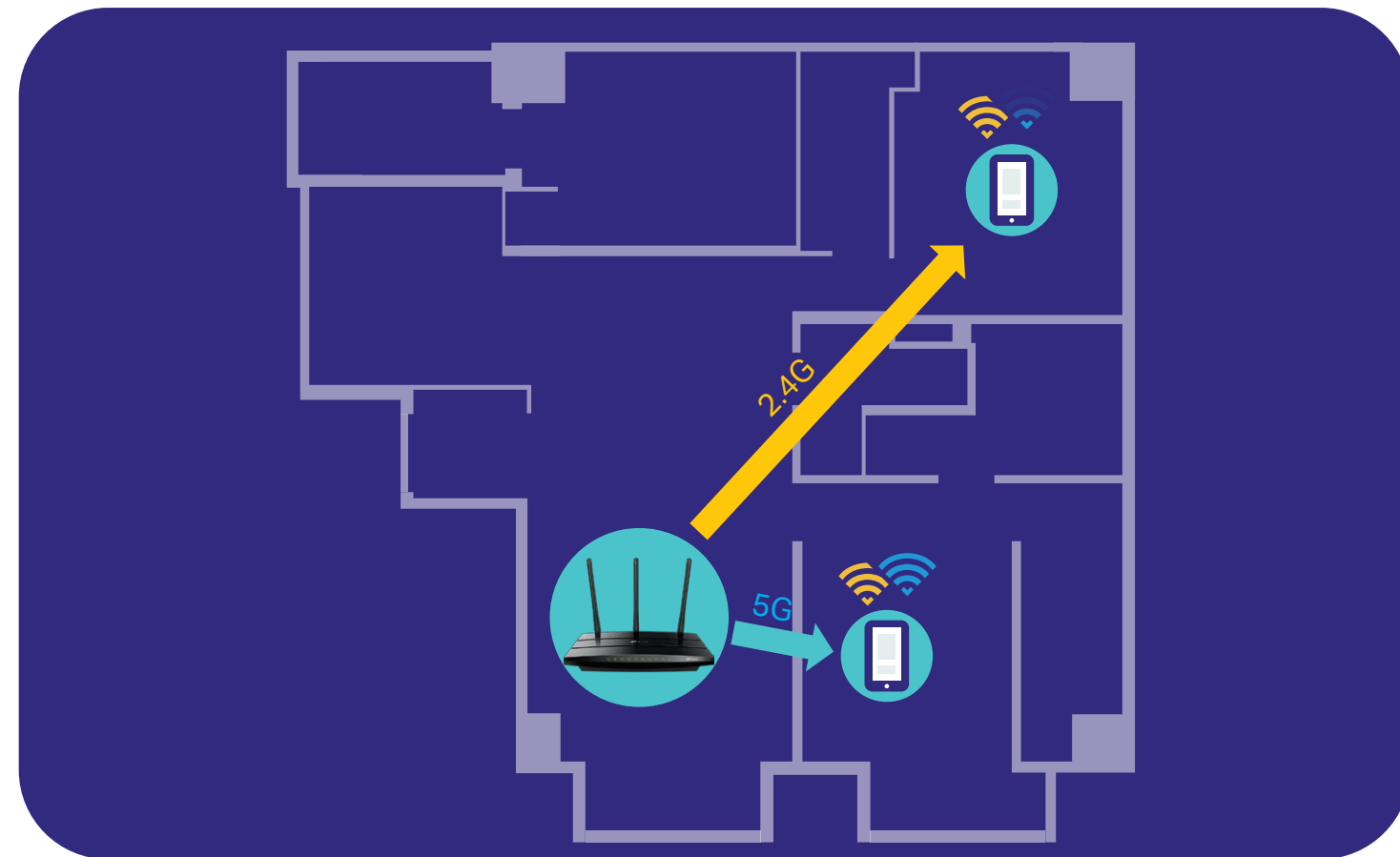


TurboQAM™ Technology

TurboQAM™(256QAM) technology on 5GHz boosts your wireless network speed, compared to standard single-stream routers.

Highlights

Fully Enhanced Wi-Fi Performance by 802.11ac Wave2



Smart Connect

Smart Connect intelligently selects the best available Wi-Fi band for each device to keep you connected at top-speed—without worry of weak or dropped connections.



Airtime Fairness

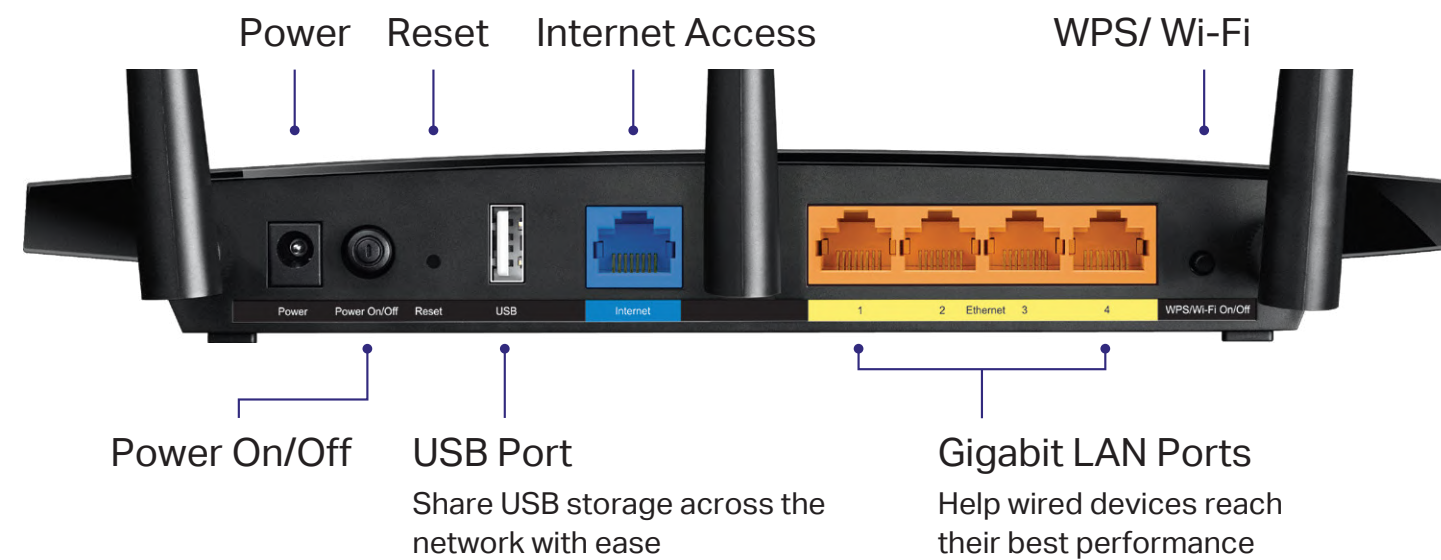
Airtime Fairness equally divides attention among all your devices, letting your high-speed devices transfer more data and improving network efficiency and performance.

Highlights

Powerful Connections

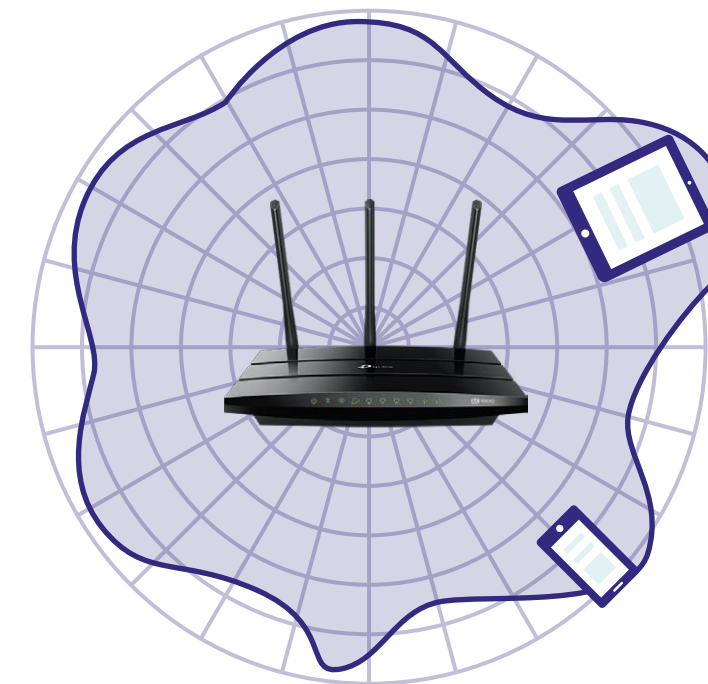
Wired devices achieve peak performance with Gigabit Ethernet ports that operate up to 10× faster than the norm.

The Archer A9's USB port makes it easy to connect external drives to the router to rapidly share files, photos, videos, and music—wirelessly.

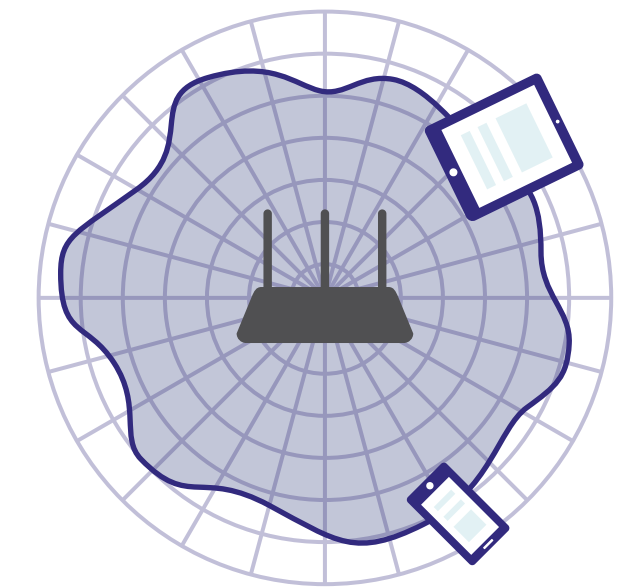


A Big Boost for Wi-Fi Range

Three external antennas and one internal antenna cast Wi-Fi signals to every corner of your home. Beamforming technology detects devices, even if they are far-away or low-powered, and concentrates wireless signal strength towards them.



Archer A9



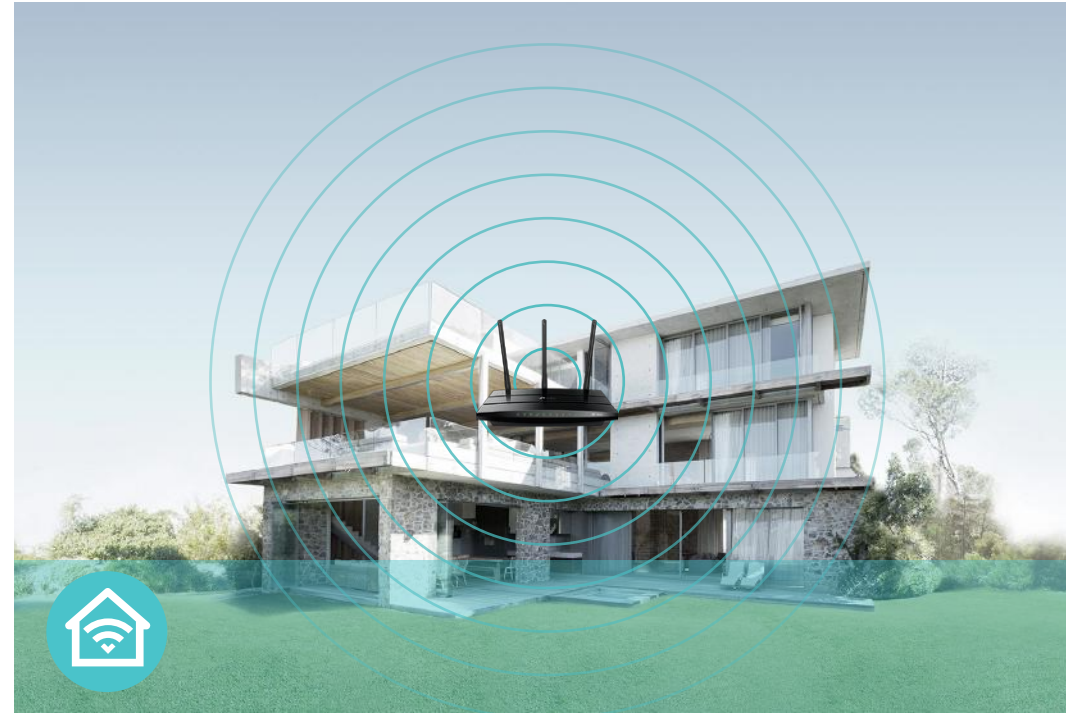
Regular Router

Features



Speed

- **Ultimate Wireless Speed** – Combined wireless speeds up to 600Mbps over 2.4GHz and 1300Mbps over 5GHz
- **Support 802.11 ac** – Provides a data transfer rate 3 times faster than 802.11n for each stream



Wi-Fi Range

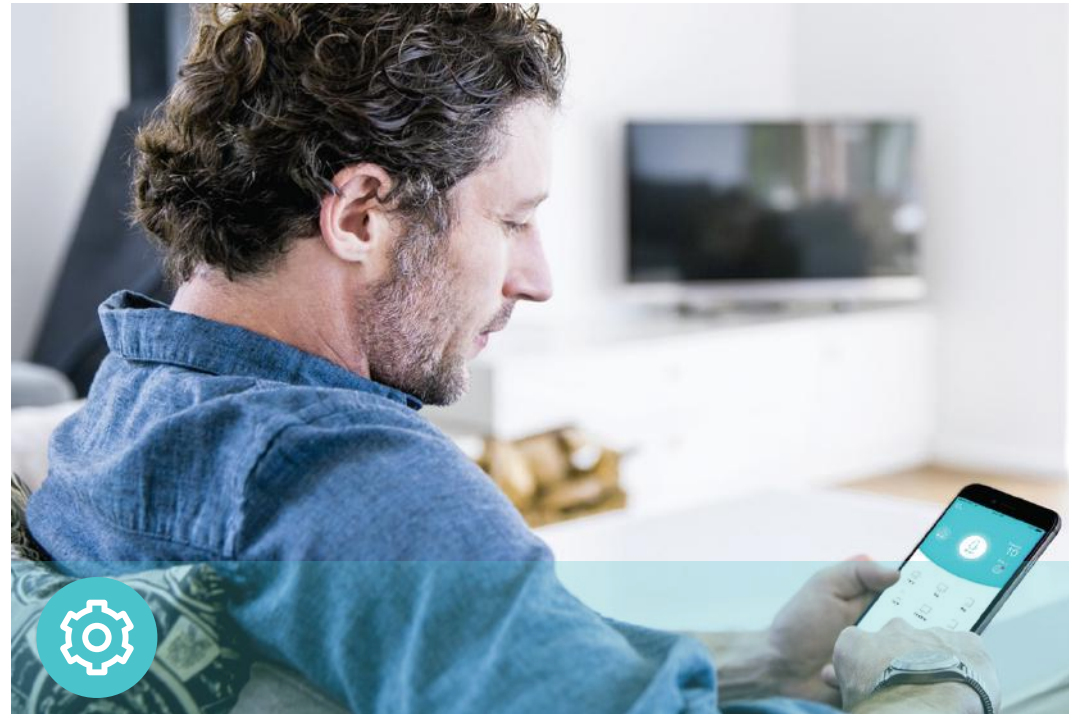
- **Ultimate Range Wi-Fi** – 3 dual band high-performance antennas with a high-powered amplifier ensure the widespread Wi-Fi coverage and a stable connection



Reliability

- **Simultaneous Dual Band** – Separate Wi-Fi bands enable more devices to connect to your network without a drop in performance
- **Easy Bandwidth Management** – Advanced QoS makes it easier for you to manage the bandwidth of connected devices

Features



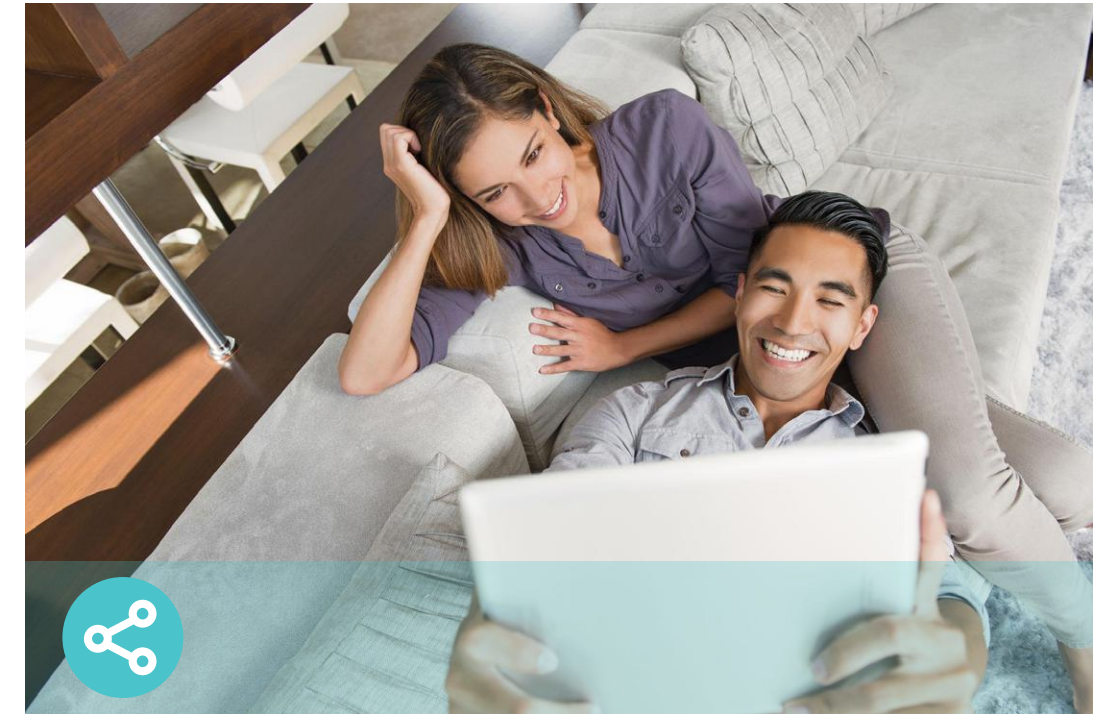
Ease of Use

- Intuitive Web UI – Ensures quick and simple installation without hassle
- Fast Encryption – One-touch WPA wireless security encryption with the WPS/Wi-Fi button
- Wi-Fi On/Off – Turns on/off wireless radio as needed using the WPS/Wi-Fi button
- Power On/Off – Conveniently powers on or off your router as required
- Hassle-free Management with Tether App – Network management is made easy with the TP-Link Tether app, available on any Android and iOS device



Security

- Guest Network – Keeps your main network secure by creating a separate network for friends and visitors
- Access Control – Establishes a whitelist or blacklist to allow or restrict certain devices to access the internet
- Parental Controls – Manage when and how connected devices can access the internet
- VPN Server – PPTP VPN and OpenVPN are supported, making it easy to set up a secure connection between your private network and the internet
- Encryptions for Secure Network – WPA-PSK and WPA2-PSK encryptions provide active protection against security threats



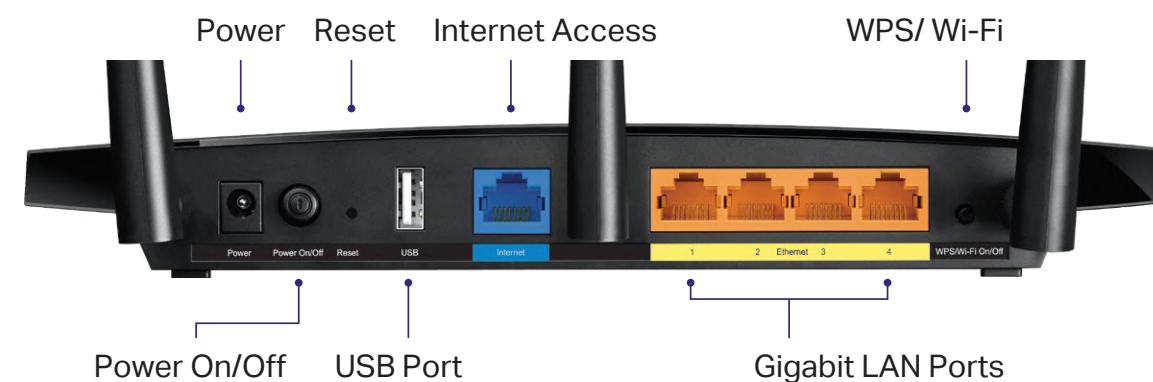
Easy Sharing

- USB Port for Fast Sharing – With the USB 2.0 port, you can access and share your files and media locally. Through the router's FTP server, you can also access your files and media from network devices remotely
- Built-in Media Server – Allows you to play music, watch videos and view photos from any device on your network

Specifications

Hardware

- Ports: 1 Gigabit WAN Port, 4 Gigabit LAN Ports, 1 USB 2.0 Port
- Buttons: Power On/Off Button, Reset Button, WPS/Wi-Fi On/Off Button
- Antennas: 3 External Antennas + 1 Internal Antenna
- External Power Supply: 12VDC/1.5A
- Dimensions (W x D x H): 9.6 x 6.4 x 1.3 in. (243 X 160.6 X 32.5 mm)



Wireless

- Wireless Standards: IEEE 802.11ac/n/a 5GHz, IEEE 802.11b/g/n 2.4GHz
- Frequency: 2.4GHz and 5GHz
- Signal Rate: 1300Mbps at 5GHz, 600Mbps at 2.4GHz
- CE EIRP: <20dBm(2.4GHz), <23dBm(5GHz)
- FCC Transmit Power: <30dBm(2.4GHz & 5GHz)
- Reception Sensitivity:
 - 5GHz:
 - 11a 6Mbps: -93dBm, 11a 54Mbps: -76dBm
 - 11ac HT20 mcs8: -68dBm, 11ac HT40 mcs9: -64dBm
 - 11ac HT80 mcs9: -61dBm
 - 2.4GHz:
 - 11g 54Mbps: -77dBm
 - 11n HT20 mcs7: -74dBm, 11n HT40 mcs7: -72dBm
- Wireless Function: Enable/Disable Wireless Radio, WDS Bridge, WMM, Wireless Statistics
- Wireless Security: Enable/Disable SSID Broadcast, 64/128-bit WEP, WPA/WPA2, WPA-PSK/WPA-PSK2 encryptions, QSS

Specifications

Software

- Quality of Service: WMM, Bandwidth Control
- WAN Type: Dynamic IP, Static IP, PPPoE, PPTP(Dual Access), L2TP(Dual Access), Bigpond
- Management: Access Control, Local Management, Remote Management
- DHCP: Server, DHCP Client List, Address Reservation
- Port Forwarding: Virtual Server, Port Triggering, UPnP, DMZ
- Dynamic DNS: DynDns, NO-IP, TP-Link
- VPN Server: PPTP, Open VPN
- Access Control: Parental Control, Local Management Control, Blacklist, Whitelist
- Firewall Security: DoS, SPI Firewall, IP and MAC Address Binding
- Protocols: IPv4, IPv6
- USB Sharing: Supports Samba (Storage), FTP Server, Media Server
- Guest Network: 2.4GHz guest network x 1, 5GHz guest network x 1

Others

- Certification:
CE, FCC, RoHS, RCM
- System Requirements:
Microsoft Windows 98SE/NT/2000/XP/Vista™/7/8/8.1/10, MAC OS, NetWare, UNIX or Linux
Internet Explorer 11, Firefox 12.0, Chrome 20.0, Safari 4.0, or other Java-enabled browser
Cable or DSL Modem
Subscription with an internet service provider (for internet access)
- Environment:
Operating Temperature: 0°C~40°C (32°F ~104°F)
Storage Temperature: -40°C~70°C (-40°F ~158°F)
Operating Humidity: 10%~90% non-condensing
Storage Humidity: 5%~90% non-condensing
- Package Contents
Wireless Router Archer A9
Power Adapter
RJ45 Ethernet Cable
Quick Installation Guide



For more information, please visit

<http://www.tp-link.com/en/products/details/Archer-A9.html>

or scan the QR code left

Attention: This device may only be used indoors in all EU member states and EFTA countries.

Specifications are subject to change without notice. TP-Link is a registered trademark of TP-Link Technologies Co., Ltd. Other brands and product names are trademarks or registered trademarks of their respective holders. Copyright ©2018 TP-Link Technologies Co., Ltd. All rights reserved.

* Maximum wireless signal rates are the physical rates derived from IEEE Standard 802.11 specifications. Actual wireless data throughput and wireless coverage are not guaranteed and will vary as a result of 1) environmental factors, including building materials, physical objects, and obstacles, 2) network conditions, including local interference, volume and density of traffic, product location, network complexity, and network overhead, and 3) client limitations, including rated performance, location, connection, quality, and client condition.

Use of MU-MIMO requires clients to also support MU-MIMO.

www.tp-link.com

TP-Link AC1900 Smart Wi-Fi Router **Archer A9**