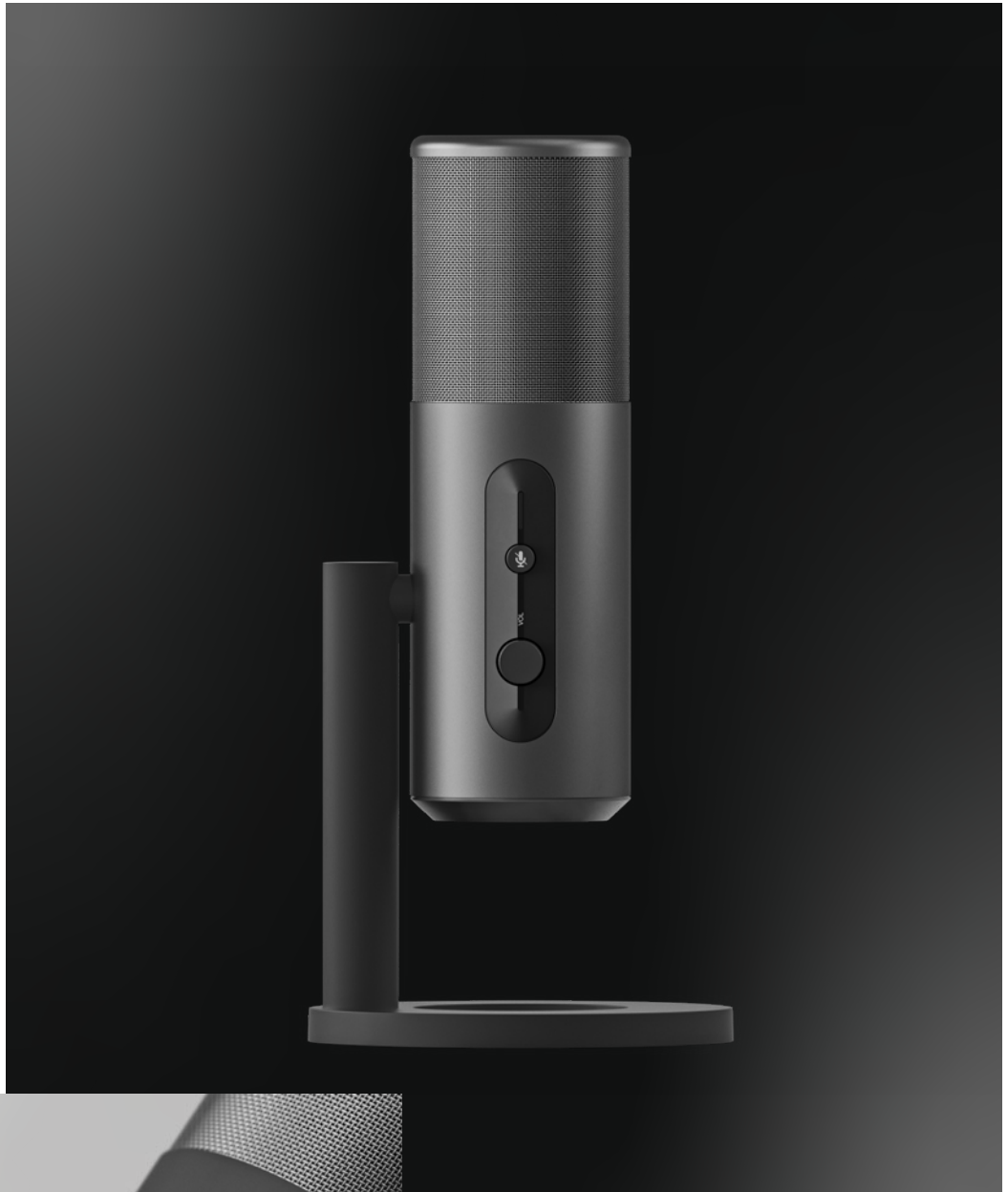


EPOS



B20
Frequently Asked
Questions

What is the best way to talk into the microphone?

To get the most optimal recording, we recommend talking into the front of the microphone facing the mute button and volume wheel. In terms of optimal recording distance between the microphone and your mouth, we recommend a distance of 15-20 cm at 50% gain.

How do I connect my B20?

The B20 connects through a USB-C to USB-A cable which comes packaged with the B20.

What on-the-mic controls does the B20 feature?

The B20 features volume, gain and mute controls as well as a choice of four polar patterns – cardioid, stereo, bidirectional and omnidirectional for optimal recording setup. These on-the-mic controls allows intuitive and hassle-free control over your audio.

Why should I download the EPOS Gaming Suite?

The EPOS Gaming Suite for PC allows you to fully customize your microphone and playback EQ, gain, noise gate levels, voice enhancer, noise gate and reverb controls to take your streaming game to the next level. The EPOS Gaming Suite allows you to toggle between 7.1 surround sound and 2.0 stereo when your favorite 3.5 mm headset is connected through the B20.

Which platforms are compatible with the B20?

The B20 is compatible with PC, Mac® and PS4™.

Does the B20 come with a stand?

The B20 comes with a dedicated desk stand that allows perfect fit and placement/adjustment to suit your preferences. It is further possible to detach the B20 from the desk stand and easily attach a boom-arm with a 3/8" thread for even more positions.

In which scenarios should I use the four pick-up patterns?

Cardioid is perfect for solo recording as sound is picked up from the front of the microphone, while background noise is dampened. Stereo opens up a wider sound field and makes for more immersive, natural sounding audio. Bidirectional records from both the front and back of the microphone, while dampening sound on either side of the microphone, making it optimal for casting with a partner, while the omnidirectional pickup pattern picks up sound from every direction, making it suitable for collaborative game streaming. You can easily change between the patterns for optimal recording setup with the turn of a dial.

Which accessories are included with the B20?

A USB-C to USB-A cable (2.9 m) that connects the B20 to your preferred platform comes in the package together with a dedicated desk stand.

How do I save my preferred microphone side tone, volume, and gain settings?

To save your preferred microphone settings, you need to download the EPOS Gaming Suite on your PC. After adjusting the settings to your liking, the EPOS Gaming Suite saves your side tone, volume, and gain settings on your microphone locally for when you want to use the microphone on other platforms.

About EPOS

EPOS is an audio and video solution company developing and selling devices for business professionals and the gaming community. Based on leading and advanced technologies, the Danish founded company delivers high-end audio and video solutions with design, technology and performance as paramount parameters.

The establishment of EPOS is based on the decision to let the business segments of the joint venture – known as Sennheiser Communications – between Sennheiser Electronic GmbH & Co. KG and Demant A/S evolve in different set-ups. Alongside the introduction of a new own-branded portfolio, EPOS continues to sell the current Sennheiser Communications portfolio co-branded as EPOS | SENNHEISER.

EPOS is part of the Demant Group – a world-leading audio and hearing technology group. As such, it builds on more than 115 years of experience of working with innovation and sound.

With headquarters in Copenhagen, Denmark, EPOS operates in a global market with offices and partners in more than 30 countries.

Find more information at www.eposaudio.com